

Figure 1: FEBIAD test target on TM2 Source Tray. Left coil connector circled.



Figure 2: Close up of the solder site on the left coil line. Coil connected. Leak site circled.



Figure 3: Solder splash marks on the Source Tray base plate



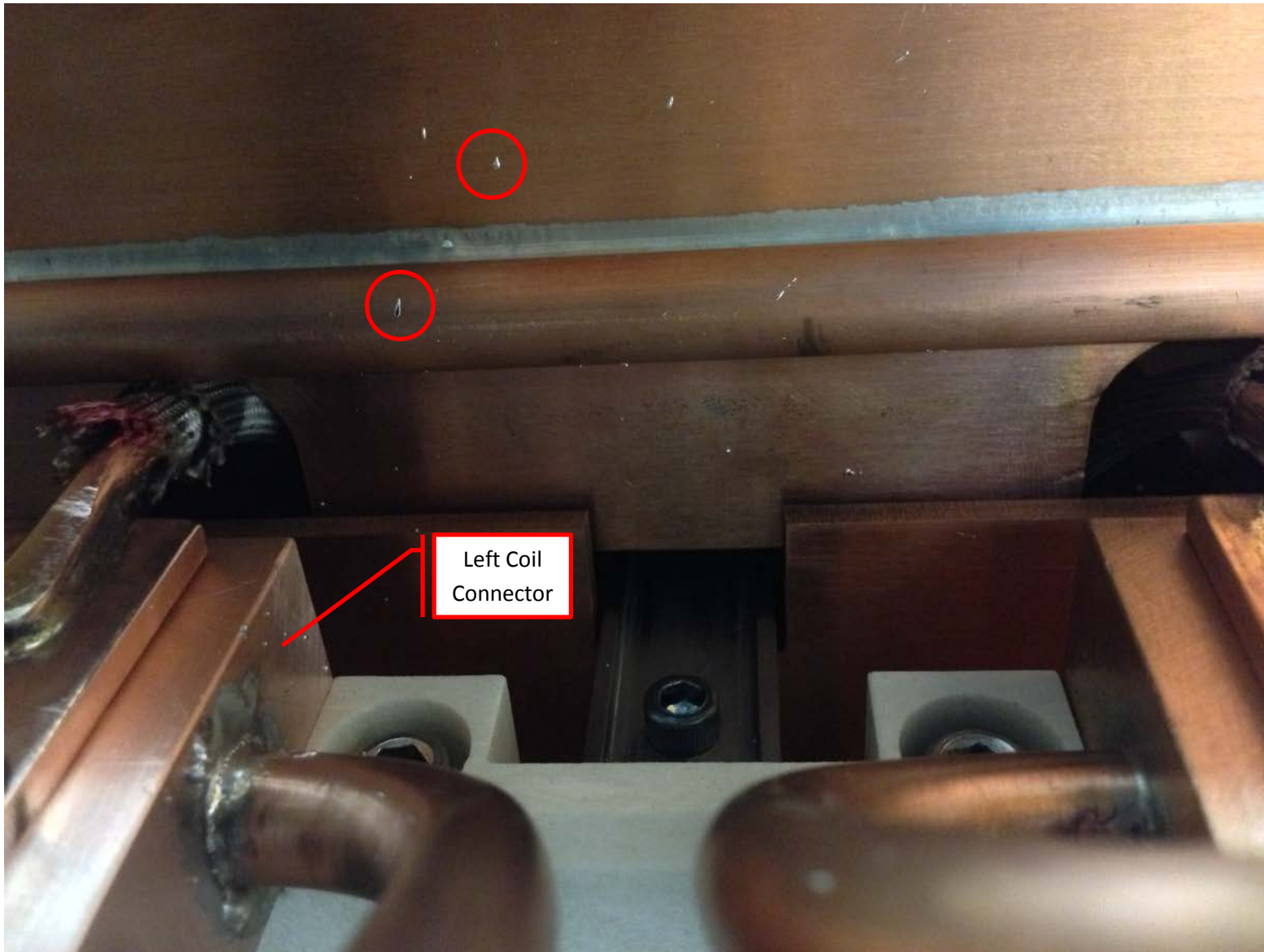


Figure 4: Solder splash marks on the Heat Shield close o the leak site

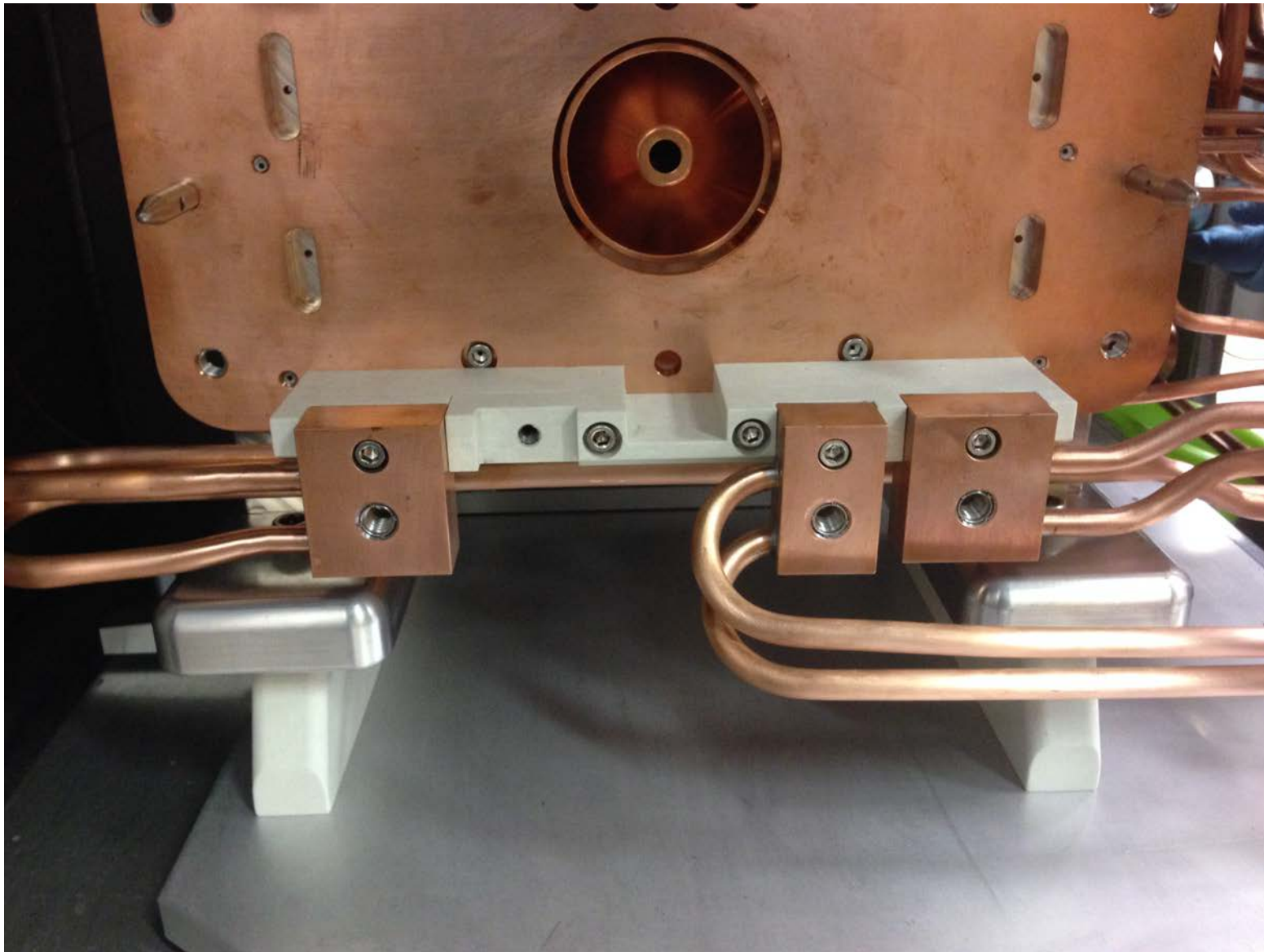


Figure 5: Coil line removed from Source Tray