

NOTE:

-DIM'S IN m.m.
-POT. READS 20.11 kOhm

T2-MK2 ELEVATIONS

Sept. 6, 2022

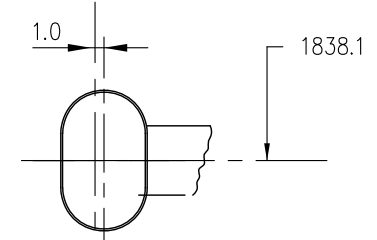
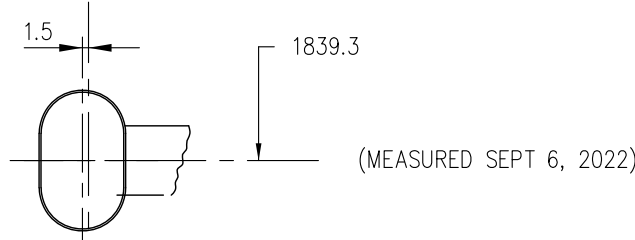
pg. 1 of 1
A. NEWSOME

ENTRY

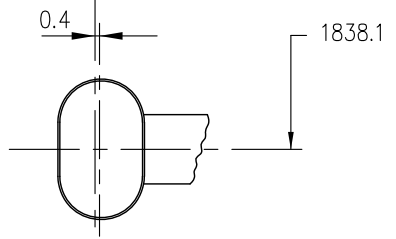
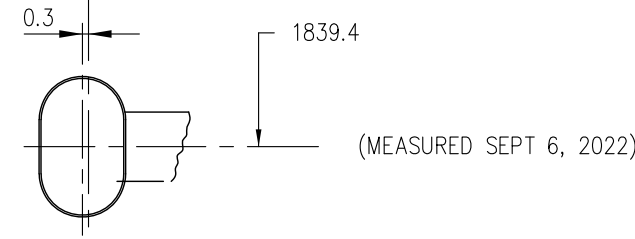
EXIT

ALL VIEWS DRAWN FROM PERSPECTIVE
OF BEAM DIRECTION

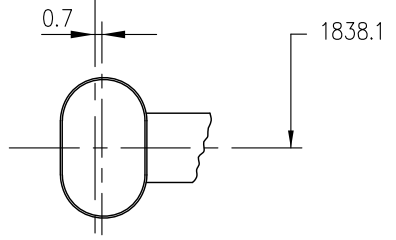
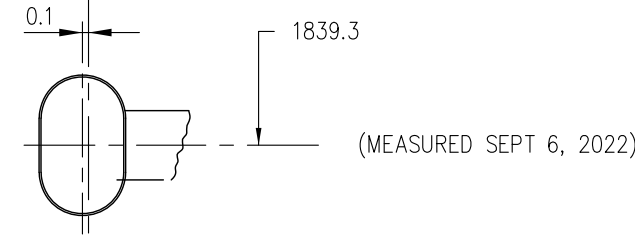
POS'N #5
(18.70 Kohm)
(INSTALLED JULY, '22)
(5cm BERYLLIUM)



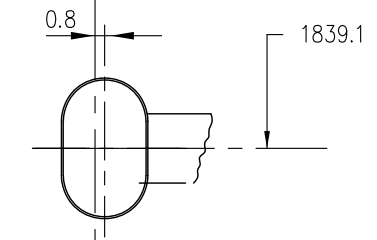
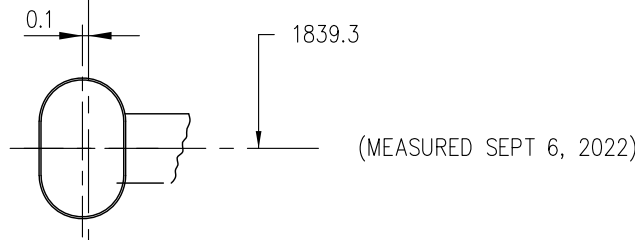
POS'N #4
(16.19 Kohm)
(INSTALLED OCT 5, '17)
(12mm BERYLLIUM)



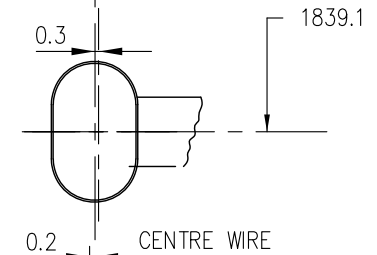
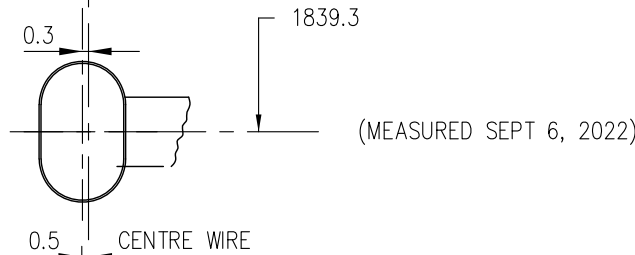
POS'N #3
(13.64 Kohm)
(INSTALLED JULY, '22)
(5cm BERYLLIUM)



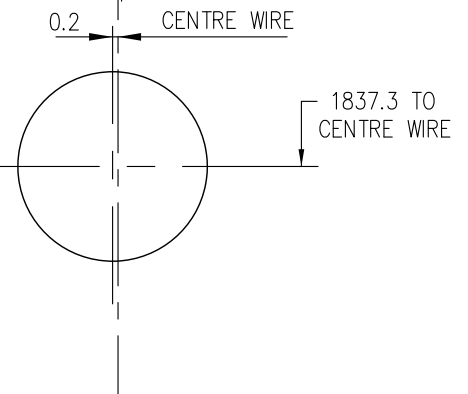
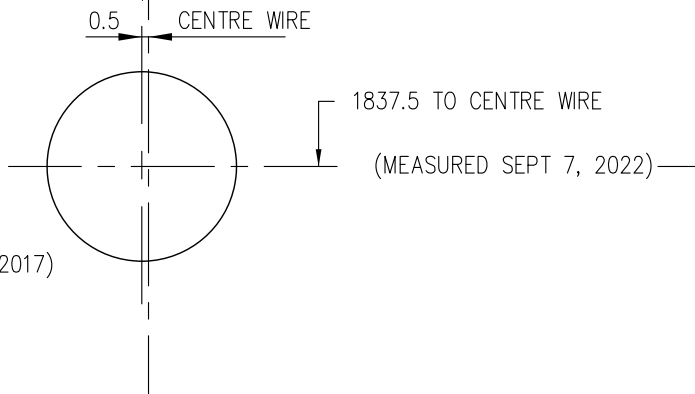
POS'N #2
(10.56 Kohm)
(INSTALLED APR 14, '16)
(10cm BERYLLIUM)



POS'N #1
(6.40 Kohm)
(INSTALLED APR 14, '16)
(10cm BERYLLIUM)



PROFILE MONITOR
(MOLY WIRE)
(INSTALLED APR 5, 2017)



← DESIGN CENTER OF BEAM/ALUM. JIG →