

B/L 1A T1-MK2
TARGET LADDER INFORMATION

Work performed : New beryllium targets installed.

Date : Sept 29, 2016 By : Isaac Earle

Date installed in Beamline : Sept 29, 2016

TARGET POS'N	MATERIAL	COMMENTS
1	12mm Be	170 μ A limit New Sept 2016. Has not seen beam. Ser. #101
2	12mm Be	170 μ A limit New Sept 2016. Has not seen beam. Ser. #102
3	12mm Be	170 μ A limit New Sept 2016. Has not seen beam. Ser #103
4	12mm Be	170 μ A limit. Ser #Oct. 06 #1 New May 25, 2007 Reached end of life. Do not use.
5	10mm Graphite	150 μ A limit New Aug 9, 2007. Has seen beam.

COMMENTS : Position 4 beam spot photos available under RH - Meson Hall E-Log # 208.

OPS.: SIGN THIS FORM & MAKE 5 COPIES. RETURN THE ORIGINAL TO ORIGINATOR.
 PLACE 1 COPY OF THE FORM IN THE FOLLOWING BOOKS:
 1-GREEN BINDER.....TARGET INFORMATION DOCUMENTS.
 2-BLUE BOOK
 3-TARGETS.....brown book, BBnote section
 4-BEAMLINES..... " " " "
 5-1AOP..... " " " "

-Update XTPage page 7L and when finished make sure it is available on other XTPages.
 -Print-out page 7L, cut-out the pertinent section and tape it to the J-panel target control station.

RECEIVED BY OPS.: [Signature] DATE: September 29, 2016

NOTE:

- DIM'S IN m.m.
- POT. READS 20.27

T1-MK2
1830.0 ELEV.

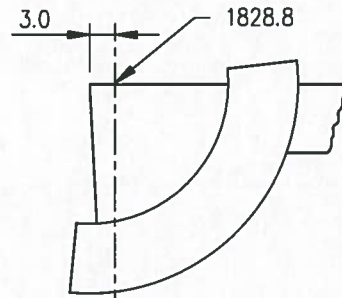
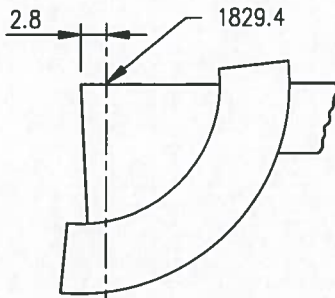
SEPT 28, 2016

pg. 1 of 1
I. Earle

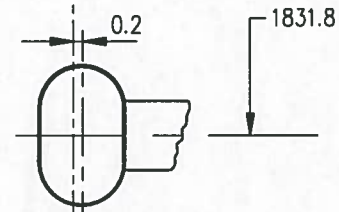
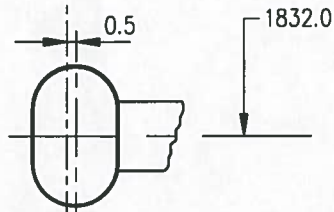
ENTRY

EXIT

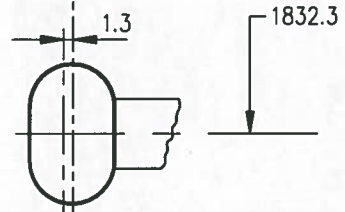
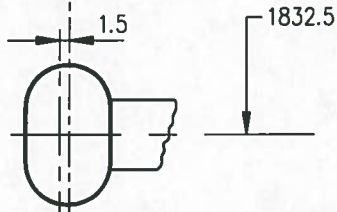
POS'N #5
SER.# JUL 07 #1
New AUG 9/07



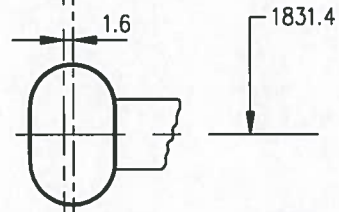
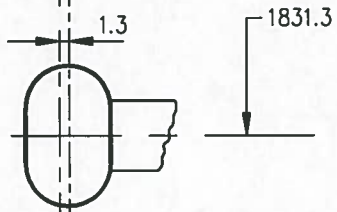
POS'N #4
SER.# OCT. 06 #1
New MAY 25/07



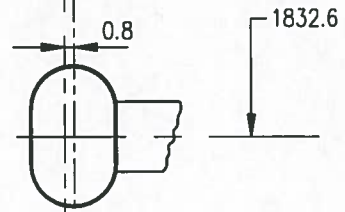
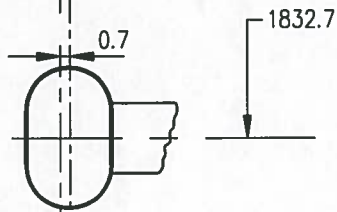
POS'N #3
SER.# 103
New SEPT 2016



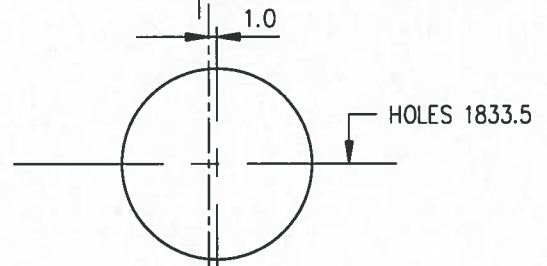
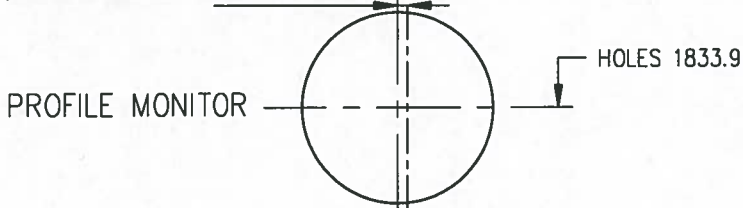
POS'N #2
SER.# 102
New SEPT 2016



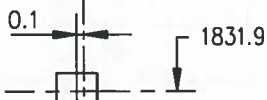
POS'N #1
SER.# 101
New SEPT 2016



MEASUREMENT NOT POSSIBLE
(OBSCURED BY PROTECT MON.)



PROTECT MONITOR
5.5 m.m. W. X 5 m.m. Hi.



DESIGN CENTER OF BEAM