

NOTE:

- DIM'S IN m.m.
- POT. READS 20.09/20.10 Kohm

T2-MK2 ELEVATIONS

APRIL 24, 2015

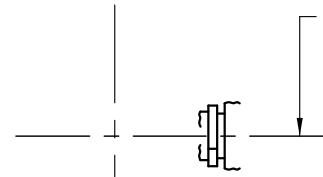
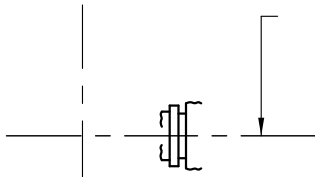
pg. 1 of 2

I. EARLE

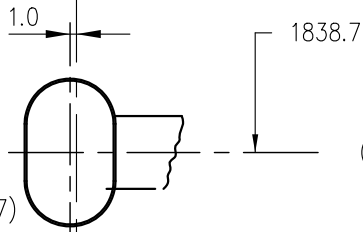
ENTRY

EXIT

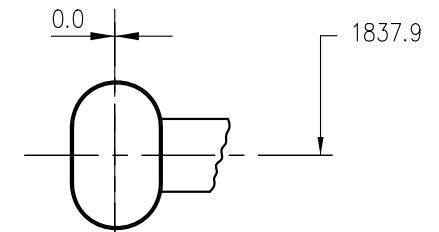
POS'N #5
PLUGGED
(18.70 Kohm)



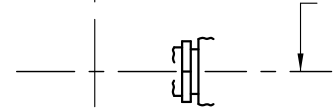
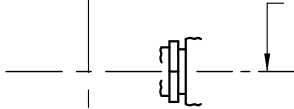
POS'N #4
(16.19 Kohm)
(INSTALLED JAN 29, 1997)



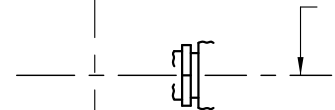
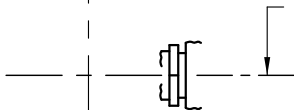
(MEASURED MAR 12, 2015)



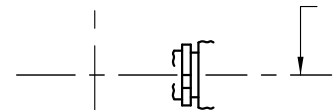
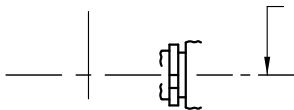
POS'N #3
PLUGGED
(13.64 Kohm)



POS'N #2
PLUGGED
(10.56 Kohm)

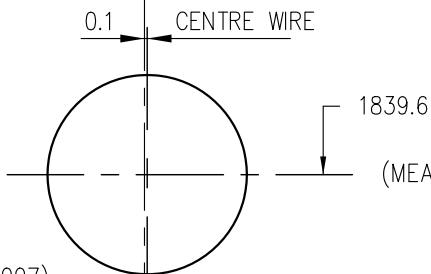


POS'N #1
PLUGGED
(6.40 Kohm)



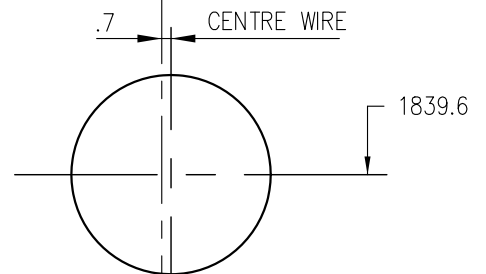
PROFILE MONITOR
(MOLY WIRE)
(INSTALLED MAY 4, 2007)

0.1 CENTRE WIRE

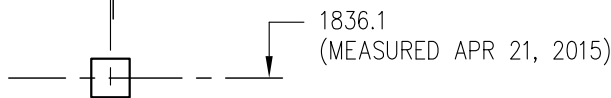


(MEASURED MAY 2, 2014)

.7 CENTRE WIRE



PROTECT MON.
(INSTALLED APR 20, 2015)



(MEASURED APR 21, 2015)

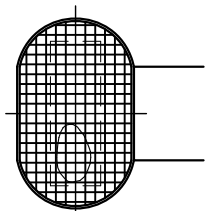
DESIGN CENTER OF BEAM/ALUM. JIG

T2-MK2 BEAMSPOTS

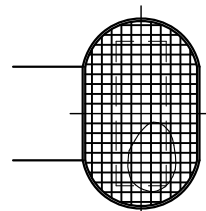
ENTRY

EXIT

POS'N #4



VIEWED FACING DOWNSTREAM



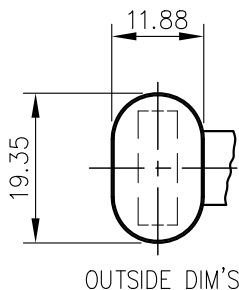
VIEWED FACING UPSTREAM

GRID SPACING IS 1mm

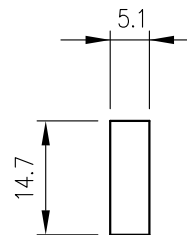
BEAM SPOT MEASURED FEB 27, 2015

FIRST BEAM ON TARGET: APRIL 2014

LOW SPOT CAUSED BY OVER-CORRECTED PROTECT MONITOR ELEVATION IN MAY 2014
MONITOR WAS ADJUSTED APPROXIMATELY 3mm UP DURING 2015 SHUTDOWN TO CORRECT



OUTSIDE DIM'S



Be T'GT

B/L 1A 1Z-MK2
TARGET LADDER INFORMATION

Work performed : Pos'n 4 Beam spot +
Elevation Measured. T2 Protect Adjusted

Date : April 24, 2015 By : Isaac Earle
 Date installed in Beamline : April 20, 2015

TARGET POS'N	MATERIAL	COMMENTS
1	Plugged	
2	Plugged	
3	Plugged	
4	10cm Be	200 μ A limit. New Jan 29, 1997. First beam April 2014.
5	Plugged	

COMMENTS : New T2 Protect cassette installed to
adjust upwards approximately 3mm. See elevations sheet.

Pos'n 4 elevations and beam spot measured.

Protect and profile monitor electronics checked by Mike Russell

- OPS.: SIGN THIS FORM & MAKE 5 COPIES. RETURN THE ORIGINAL TO ORIGINATOR.
 PLACE 1 COPY OF THE FORM IN THE FOLLOWING BOOKS:
- 1-GREEN BINDER.....TARGET INFORMATION DOCUMENTS.
 - 2-BLUE BOOK
 - 3-TARGETS.....brown book, BBnote section
 - 4-BEAMLINES..... " " " "
 - 5-1AOP..... " " " "

- Update XTPage page 7L and when finished make sure it is available on other XTPages.
- Print-out page 7L, cut-out the pertinent section and tape it to the J-panel target control station.

RECEIVED BY OPS.: _____ DATE: _____