

B/L 1A T1-MK2
TARGET LADDER INFORMATION

Work performed : See comments below.

Date : SEP-DEC ²⁰¹² By : JEAN BARRE

Date installed in Beamline : Nov 14, 2014

TARGET POS'N	MATERIAL	COMMENTS
1	PLUGGED	
2	PLUGGED	
3	PLUGGED	
4	12mm Be	170µA LIMIT NEW MAY 25, 2007 HAS NOT SEEN BEAM SER # OCT. 06 #1
5	10mm Graphite	150µA LIMIT NEW AUG 9, 2007 HAS SEEN BEAM SER # JUL. 07 #1

COMMENTS : Failed target at pos'n 3 plugged Sept 2012.
Upper delta seals replaced Oct 2012. All leak check OK.
Revirring completed Dec 10, 2012 by Dave Cameron.

Profile and protect monitor electrical check performed by
Dave Cameron after installation in beamline → All appeared OK

- OPS.: SIGN THIS FORM & MAKE 5 COPIES. RETURN THE ORIGINAL TO ORIGINATOR.
PLACE 1 COPY OF THE FORM IN THE FOLLOWING BOOKS:
- 1-GREEN BINDER.....TARGET INFORMATION DOCUMENTS.
 - 2-BLUE BOOK
 - 3-TARGETS.....brown book, BBnote section
 - 4-BEAMLINES..... " " " "
 - 5-1AOP..... " " " "

- Update XTPage page 7L and when finished make sure it is available on other XTPages.
- Print-out page 7L, cut-out the pertinent section and tape it to the J-panel target control station.

RECEIVED BY OPS.: _____ DATE: _____

NOTE:

- DIM'S IN m.m.
- POT. READS 20.26

T1-MK2
1830.0 ELEV.

NOV 14/14

pg. 1 of 1

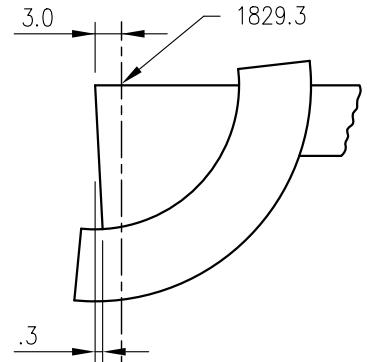
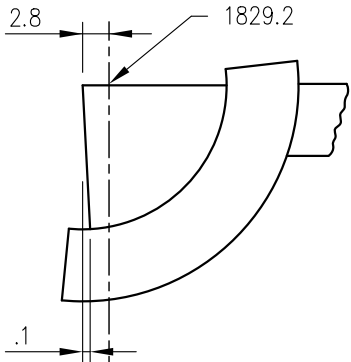
I. Earle

ENTRY

EXIT

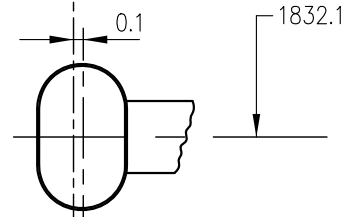
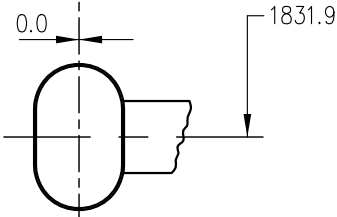
POS'N #5

SER.# JUL 07 #1
 Tube to Saddle 57.48 m.m.
 New AUG 9/07



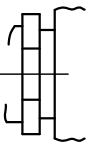
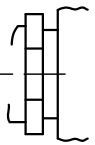
POS'N #4

SER.# OCT. 06 #1
 Tube to Ct'r 54.195 m.m.
 New MAY 25/07



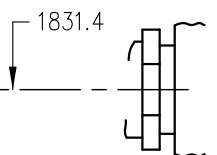
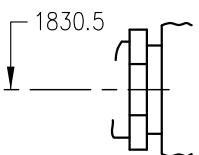
POS'N #3

PLUGGED



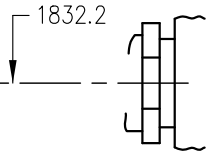
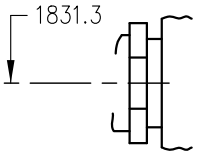
POS'N #2

PLUGGED



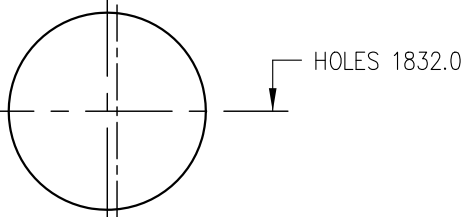
POS'N #1

PLUGGED

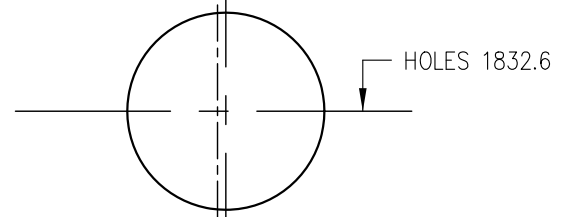


NOT RECORDED

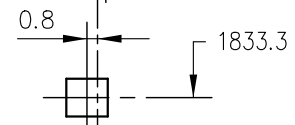
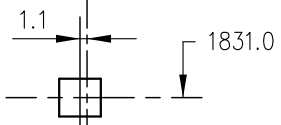
PROFILE MONITOR



1.4



PROTECT MONITOR
 5.5 m.m. W. X 5 m.m. Hi.



DESIGN CENTER OF BEAM