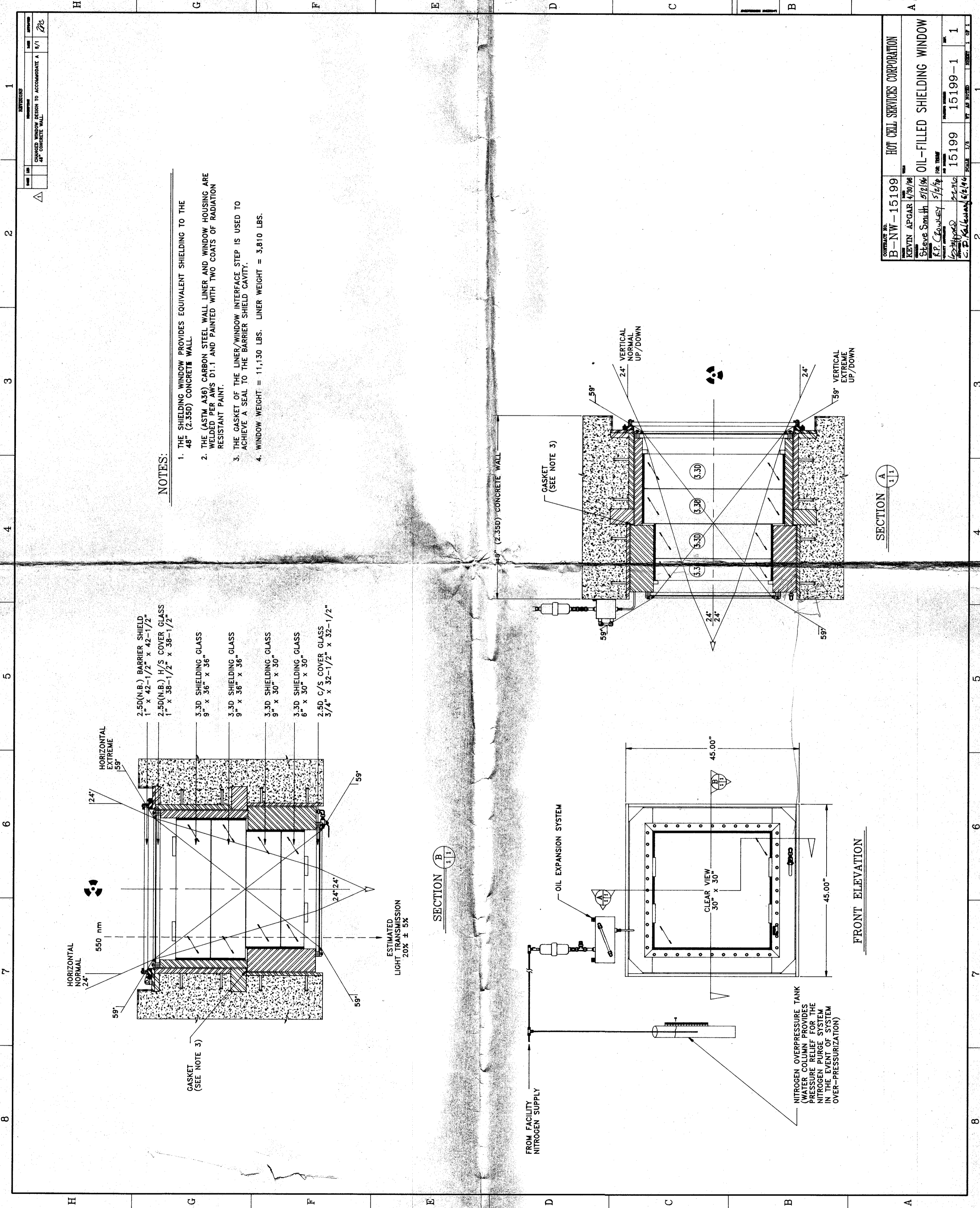


NOTICE!
 REDUCED COPY
 DRAWING NOT TO SCALE
 PRELIMINARY



- NOTES:**
1. THE SHIELDING WINDOW PROVIDES EQUIVALENT SHIELDING TO THE 48" (2.35D) CONCRETE WALL.
 2. THE (ASTM A36) CARBON STEEL WALL LINER AND WINDOW HOUSING ARE WELDED PER AWS D1.1 AND PAINTED WITH TWO COATS OF RADIATION RESISTANT PAINT.
 3. THE GASKET OF THE LINER/WINDOW INTERFACE STEP IS USED TO ACHIEVE A SEAL TO THE BARRIER SHIELD CAVITY.
 4. WINDOW WEIGHT = 11,130 LBS. LINER WEIGHT = 3,810 LBS.

REV	DATE	DESCRIPTION	BY	CHK
1	1/1/78	CHANGED WINDOW DESIGN TO ACCOMMODATE A 1/1" CONCRETE WALL		

CONTRACT NO.	B-NW-15199	CLIENT	HOT CELL SERVICES CORPORATION
DESIGNED BY	KEVIN AFGAR 1/30/78	DATE	1/30/78
CHECKED BY	Steve Smith 5/12/78	DATE	5/12/78
APPROVED BY	K.P. Crowley 5/12/78	DATE	5/12/78
DRAWN BY	W. J. G. 5/12/78	DATE	5/12/78
CHECKED BY	C. D. Kulkarni 6/21/78	DATE	6/21/78
TITLE	OIL-FILLED SHIELDING WINDOW	SCALE	1/4" = 1'-0"
PROJECT NO.	15199	PROJECT	15199-1
SHEET NO.	1	TOTAL SHEETS	1 OF 1

SECTION B (1/1)

SECTION A (1/1)

FRONT ELEVATION

ESTIMATED LIGHT TRANSMISSION 20% ± 5%

NITROGEN OVERPRESSURE TANK
 WATER COLUMN PROVIDES THE NITROGEN PURGE SYSTEM IN THE EVENT OF SYSTEM OVER-PRESSURIZATION

FROM FACILITY NITROGEN SUPPLY

OIL EXPANSION SYSTEM

CLEAR VIEW 30" x 30"

HORIZONTAL EXTREME 59°

HORIZONTAL NORMAL 24"

- 2.50(N.B.) BARRIER SHIELD 1" x 42-1/2" x 42-1/2"
- 2.50(N.B.) 1/2 COVER GLASS 1" x 38-1/2" x 38-1/2"
- 3.30 SHIELDING GLASS 9" x 36" x 36"
- 3.30 SHIELDING GLASS 9" x 36" x 36"
- 3.30 SHIELDING GLASS 9" x 30" x 30"
- 3.30 SHIELDING GLASS 6" x 30" x 30"
- 2.50 C/S COVER GLASS 3/4" x 32-1/2" x 32-1/2"

GASKET (SEE NOTE 3)

GASKET (SEE NOTE 3)

9" (2.35D) CONCRETE WALL

24" VERTICAL NORMAL UP/DOWN

24" VERTICAL EXTREME UP/DOWN

H 1
 G 2
 F 3
 E 4
 D 5
 C 6
 B 7
 A 8