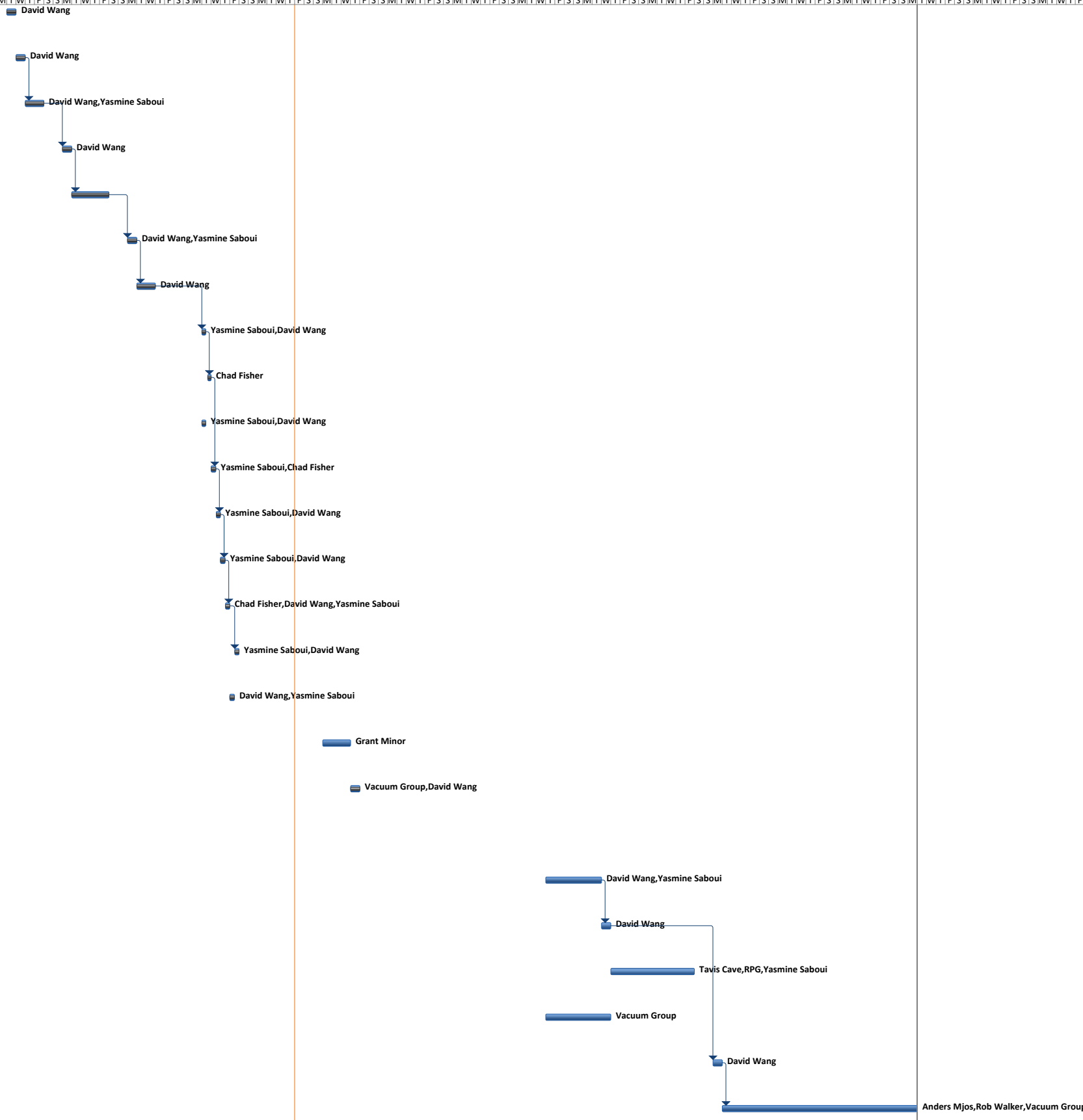


2017 Winter Shut down Target Hall Schedule

ID	Task Mode	Task Name	Duration	Start	Finish	Nov 27, '16	Dec 4, '16	Dec 11, '16	Dec 18, '16	Dec 25, '16	Jan 1, '17	Jan 8, '17	Jan 15, '17	Jan 22, '17	Jan 29, '17	Feb 5, '17	Feb 12, '17	Feb 19, '17	Feb 26, '17	Mar 5, '17	Mar 12, '17	Mar 19, '17	Mar 26, '17	Apr 2, '17	Apr 9, '17	Apr 16, '17	Apr 23, '17	Apr 30, '17	
1	✓	Shielding Blocks Move- ITW to Storage Area	1 day	Tue 1/3/17	Tue 1/3/17																								
2	✓	Anchor Bolts Clean out- Silo area	1 day	Wed 1/4/17	Wed 1/4/17																								
3	✓	Silos Re-arrangement	2 days	Thu 1/5/17	Fri 1/6/17																								
4	✓	Module Disconnection TM2- ITW(Except vacuum)	1 day	Mon 1/9/17	Mon 1/9/17																								
5	✓	ITW and TM2 Shutdown Leak Check	4 days	Tue 1/10/17	Fri 1/13/17																								
6	✓	Module Disconnection TM4-ITE(Except Vacuum)	1 day	Mon 1/16/17	Mon 1/16/17																								
7	✓	ITE and TM4 Shut Down Leak Check	2 days	Tue 1/17/17	Wed 1/18/17																								
8	✓	Module Move-TM2- ITW to SHC	0.25 days	Tue 1/24/17	Tue 1/24/17																								
9	✓	Febiad Target Installation/Leack Check	0.25 days	Tue 1/24/17	Tue 1/24/17																								
10	✓	Module Move- TM2-SHC to TCS	0.25 days	Tue 1/24/17	Tue 1/24/17																								
11	✓	Spent Target UCX Move- SHC to Storage Vault	0.5 days	Wed 1/25/17	Wed 1/25/17																								
12	✓	Module Move-TM4-ITE to SHC	0.5 days	Wed 1/25/17	Wed 1/25/17																								
13	✓	Module Move -TM4 - SHC to Silo	0.5 days	Thu 1/26/17	Thu 1/26/17																								
14	✓	Spent Target Ta Move- SHC to Storage Vault	0.5 days	Thu 1/26/17	Thu 1/26/17																								
15	✓	Module Move - TM2 - TCS to ITE	0.5 days	Fri 1/27/17	Fri 1/27/17																								
16	✓	Module Connection- TM2- ITE	0.5 days	Fri 1/27/17	Fri 1/27/17																								
17	📅	Target Hall Crane Inspection	3 days	Mon 2/6/17	Wed 2/8/17																								
18	✓	ITW TP4 Replacement	1 day	Thu 2/9/17	Thu 2/9/17																								
19	📅	Clean up ITW	1 day	Thu 11/24/16	Thu 11/24/16																								
20	📅	ISAC High Active Water Resin Can Replacement	4 days	Thu 3/2/17	Tue 3/7/17																								
21	📅	ITW 2" Return Line Ball Valve Repairing	1 day	Wed 3/8/17	Wed 3/8/17																								
22	📅	Spent Target Assay	7 days	Thu 3/9/17	Fri 3/17/17																								
23	📅	Vacuum gauge Installlation on Turbo Back Line for ISAC Target Station	5 days	Thu 3/2/17	Wed 3/8/17																								
24	📅	Clean and ITE	1 day	Mon 3/20/17	Mon 3/20/17																								
25	📅	ISAC Target Pit Module Move Ventilation	15 days	Tue 3/21/17	Mon 4/10/17																								



Project: 2017 Winter Shut Down T Date: Fri 2/3/17

Task Split

Milestone Summary

Project Summary External Tasks

External Milestone Inactive Task

Inactive Milestone Inactive Summary

Manual Task Duration-only

Manual Summary Rollup Manual Summary

Start-only Finish-only

Deadline Progress