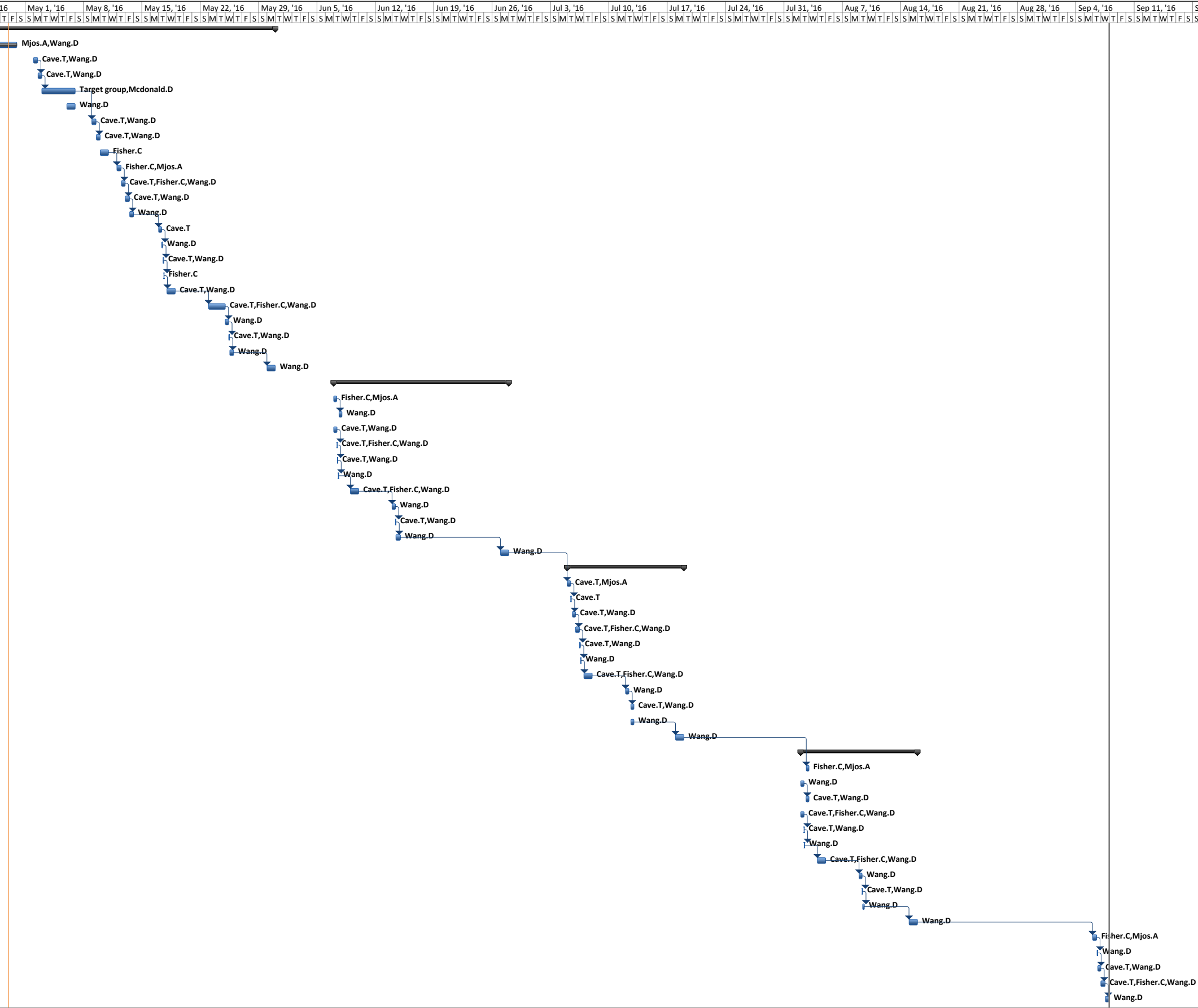


ID	Task Mode	Task Name	Duration	Start	Finish	Predecessor	Apr 24, '16	May 1, '16	May 8, '16	May 15, '16	May 22, '16	May 29, '16	Jun 5, '16	Jun 12, '16	Jun 19, '16	Jun 26, '16	Jul 3, '16	Jul 10, '16	Jul 17, '16	Jul 24, '16	Jul 31, '16	Aug 7, '16	Aug 14, '16	Aug 21, '16	Aug 28, '16	Sep 4, '16	Sep 11, '16	Sep 18, '16						
1	Task	TM2 LpTa Ready for ITW	26 days	Mon 4/25/16	Mon 5/30/16		Timeline bar																											
2	Task	TM2 Leak Check -TCS	5 days	Mon 4/25/16	Fri 4/29/16		Timeline bar																											
3	Task	Module Move-TM2-TCS to silo	0.5 days	Mon 5/2/16	Mon 5/2/16	2	Timeline bar																											
4	Task	Module Move-TM3-Silo to TCS	0.5 days	Mon 5/2/16	Mon 5/2/16	3	Timeline bar																											
5	Task	TM3 Inspection-TCS	4 days	Tue 5/3/16	Fri 5/6/16	4	Timeline bar																											
6	Task	Shielding Block transfer-ITW to ITE	1 day	Fri 5/6/16	Fri 5/6/16		Timeline bar																											
7	Task	Module Move-TM3-TCS to Silo	0.5 days	Mon 5/9/16	Mon 5/9/16	5	Timeline bar																											
8	Task	Module Move-TM2 Silo to SHC	0.5 days	Mon 5/9/16	Mon 5/9/16	7	Timeline bar																											
9	Task	Window Line Gaskets installation-TM2 -SHC	1 day	Tue 5/10/16	Tue 5/10/16		Timeline bar																											
10	Task	Lp Ta Target Insert -SHC	0.5 days	Thu 5/12/16	Thu 5/12/16	9	Timeline bar																											
11	Task	Target Installation/Electrical Check	0.5 days	Thu 5/12/16	Thu 5/12/16	10	Timeline bar																											
12	Task	Module Move-TM2-SHC to TCS	0.5 days	Fri 5/13/16	Fri 5/13/16	11	Timeline bar																											
13	Task	Module Connection-TM2-TSC/Start of Pumps	0.5 days	Fri 5/13/16	Fri 5/13/16	12	Timeline bar																											
14	Task	Camera Setting up-ITW	0.13 days	Tue 5/17/16	Tue 5/17/16	13	Timeline bar																											
15	Task	Module Disconnection-TM1-ITW	0.37 days	Tue 5/17/16	Tue 5/17/16	14	Timeline bar																											
16	Task	Module Move -TM1-SHC	0.25 days	Tue 5/17/16	Tue 5/17/16	15	Timeline bar																											
17	Task	Target Remove-TM1-SHC	0.13 days	Tue 5/17/16	Tue 5/17/16	16	Timeline bar																											
18	Task	Module Move-TM1-SHC to Silo	1 day	Wed 5/18/16	Wed 5/18/16	17	Timeline bar																											
19	Task	Spent Target Move	2 days	Mon 5/23/16	Tue 5/24/16	18	Timeline bar																											
20	Task	Module Disconnection-TM2-TCS	0.25 days	Wed 5/25/16	Wed 5/25/16	19	Timeline bar																											
21	Task	Module Move -TM2-ITW	0.25 days	Wed 5/25/16	Wed 5/25/16	20	Timeline bar																											
22	Task	Module Connection-TM2-ITW/ Start of Pumps	0.5 days	Wed 5/25/16	Wed 5/25/16	21	Timeline bar																											
23	Task	Shielding Blocks Transfer-ITE to ITW	1 day	Mon 5/30/16	Mon 5/30/16	22	Timeline bar																											
24	Task	TM4 LP Ucx Ready for ITE	15 days	Tue 6/7/16	Mon 6/27/16		Timeline bar																											
25	Task	LpUcx target Insert to SHC	0.1 days	Tue 6/7/16	Tue 6/7/16		Timeline bar																											
26	Task	Module Disconnection-TM4 -ITE	0.2 days	Tue 6/7/16	Tue 6/7/16	25	Timeline bar																											
27	Task	Module Move-TM4-ITE to SHC	0.2 days	Tue 6/7/16	Tue 6/7/16		Timeline bar																											
28	Task	LpUcx Installation/Electrical Check	0.1 days	Tue 6/7/16	Tue 6/7/16	27	Timeline bar																											
29	Task	Module Move-TM4-SHC to TCS	0.2 days	Tue 6/7/16	Tue 6/7/16	28	Timeline bar																											
30	Task	Module Connection-TM4-TCS/Start of Pumps	0.2 days	Tue 6/7/16	Tue 6/7/16	29	Timeline bar																											
31	Task	Spent Targt Move	1 day	Thu 6/9/16	Thu 6/9/16	30	Timeline bar																											
32	Task	Module Disconnection-TM4 -TCS	0.2 days	Tue 6/14/16	Tue 6/14/16	31	Timeline bar																											
33	Task	Module Move-TM4-TSC to ITE	0.2 days	Tue 6/14/16	Tue 6/14/16	32	Timeline bar																											
34	Task	Module connection-TM4-ITE/Start of Pumps	0.6 days	Tue 6/14/16	Tue 6/14/16	33	Timeline bar																											
35	Task	shielding Blocks Transfer ITW to ITE	1 day	Mon 6/27/16	Mon 6/27/16	34	Timeline bar																											
36	Task	TM2 HpSiC Ready for ITW	10 days	Tue 7/5/16	Mon 7/18/16		Timeline bar																											
37	Task	HpSiC Target Insert into SHC	0.25 days	Tue 7/5/16	Tue 7/5/16	35	Timeline bar																											
38	Task	Camera Setting up-ITW	0.25 days	Tue 7/5/16	Tue 7/5/16	37	Timeline bar																											
39	Task	Module Move_TM2-ITW to SHC	0.25 days	Tue 7/5/16	Tue 7/5/16	38	Timeline bar																											
40	Task	HpSiC Target Installation/Electrical Check	0.4 days	Wed 7/6/16	Wed 7/6/16	39	Timeline bar																											
41	Task	Module Move-TM2-SHC to TCS	0.25 days	Wed 7/6/16	Wed 7/6/16	40	Timeline bar																											
42	Task	Module Connection-TM2-TSC/Start of Pumps	0.25 days	Wed 7/6/16	Wed 7/6/16	41	Timeline bar																											
43	Task	Spent Target Move	1 day	Thu 7/7/16	Thu 7/7/16	42	Timeline bar																											
44	Task	Module Disconnection-TM2-TCS	0.2 days	Tue 7/12/16	Tue 7/12/16	43	Timeline bar																											
45	Task	Module Move-TM2-TCS to ITW	0.2 days	Tue 7/12/16	Tue 7/12/16	44	Timeline bar																											
46	Task	Module Connection-TM2-ITW/Start of Pumps	0.2 days	Tue 7/12/16	Tue 7/12/16	45	Timeline bar																											
47	Task	Shielding Blocks Transfer-ITE to ITW	1 day	Mon 7/18/16	Mon 7/18/16	46	Timeline bar																											
48	Task	TM4 LP Ucx Ready for ITE	10 days	Tue 8/2/16	Mon 8/15/16		Timeline bar																											
49	Task	Lp Ucx target Insert into SHC	0.1 days	Tue 8/2/16	Tue 8/2/16	47	Timeline bar																											
50	Task	Module Disconnection TM4-ITE	0.2 days	Tue 8/2/16	Tue 8/2/16	49	Timeline bar																											
51	Task	Module Move-TM4-ITE to SHC	0.2 days	Tue 8/2/16	Tue 8/2/16	50	Timeline bar																											
52	Task	UCx Target Installation/Electrical check-SHC	0.2 days	Tue 8/2/16	Tue 8/2/16		Timeline bar																											
53	Task	Module Move-TM4-SHC to TCS	0.1 days	Tue 8/2/16	Tue 8/2/16	52	Timeline bar																											
54	Task	Module Connection-TM4-TCS/Start of Pumps	0.1 days	Tue 8/2/16	Tue 8/2/16	53	Timeline bar																											
55	Task	Spent Target Move	1 day	Thu 8/4/16	Thu 8/4/16	54	Timeline bar																											
56	Task	Module Disconnection-TM4-TSC	0.1 days	Tue 8/9/16	Tue 8/9/16	55	Timeline bar																											
57	Task	Module Move-TM4-TCS to ITE	0.2 days	Tue 8/9/16	Tue 8/9/16	56	Timeline bar																											
58	Task	Module Connection-TM4-ITE/Start of Pumps	0.5 days	Tue 8/9/16	Tue 8/9/16	57	Timeline bar																											
59	Task	shielding Blocks Move	1 day	Mon 8/15/16	Mon 8/15/16	58	Timeline bar																											
60	Task	New Target to SHC	0.5 days	Tue 9/6/16	Tue 9/6/16	59	Timeline bar																											
61	Task	Module Disconnection-TM2-ITW	0.25 days	Tue 9/6/16	Tue 9/6/16	60	Timeline bar																											
62	Task	Module Move-TM2-ITW to SHC	0.25 days	Tue 9/6/16	Tue 9/6/16	61	Timeline bar																											
63	Task	New Target Installation/Electrical Check	0.5 days	Wed 9/7/16	Wed 9/7/16	62	Timeline bar																											
64	Task	Module Move-TM2-SHC to CS/Start of Pumps	0.5 days	Wed 9/7/16	Wed 9/7/16	63	Timeline bar																											



Project: Target Hall shedule 130 A  
 Date: Fri 4/29/16

**Task** (Blue bar)    **Milestone** (Diamond)    **Project Summary** (Grey bar)    **External Milestone** (Grey bar)    **Inactive Milestone** (White diamond)    **Manual Task** (White bar)    **Manual Summary Rollup** (Green bar)    **Start-only** (White arrow)    **Deadline** (Down arrow)

**Split** (Dotted bar)    **Summary** (Dashed bar)    **External Tasks** (Black arrow)    **Inactive Task** (Grey bar)    **Inactive Summary** (White bar)    **Duration-only** (White bar)    **Manual Summary** (Light blue bar)    **Finish-only** (Black arrow)    **Progress** (Grey bar)