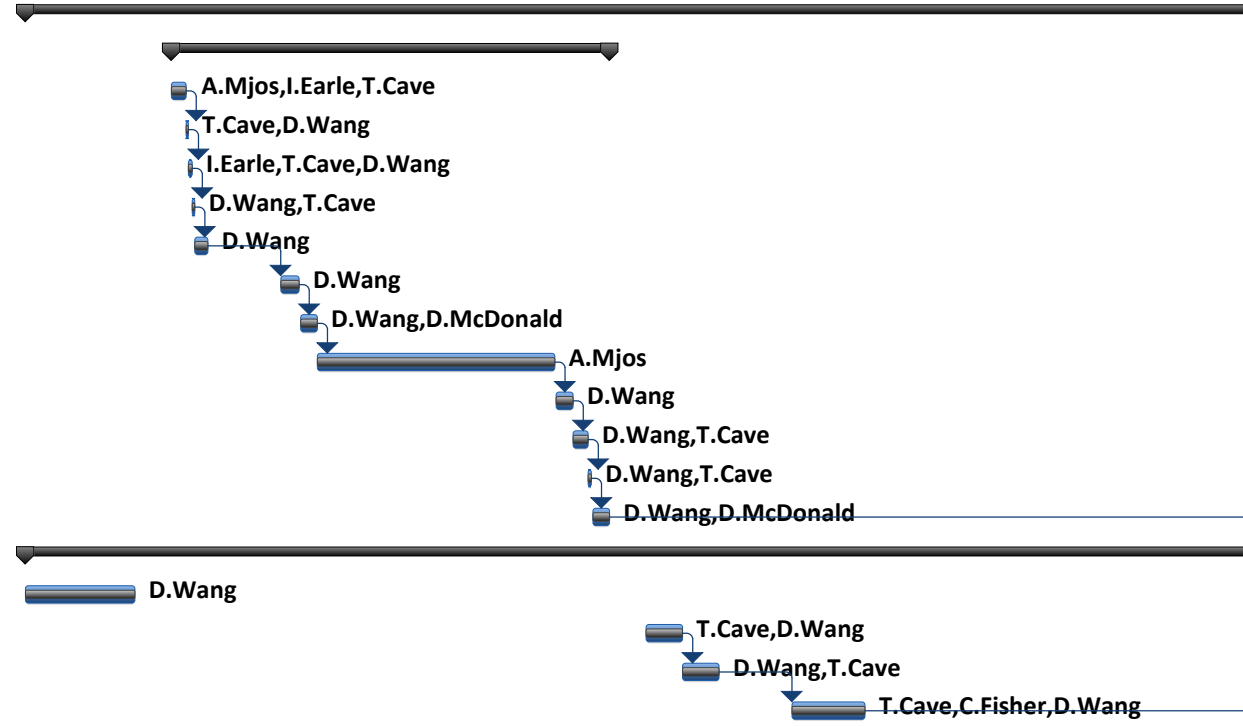


Target Hall Scheduled Activities 2015-04-07 to 2015 06-26

ID	Task Mode	Task Name	Duration	April					May			
				3/29	4/5	4/12	4/19	4/26	5/3	5/10		
1		TM4 Ta#45 ready for Beam at ITE	4 days									
2		Grounding Test-ITW, ITE	1 day									
3		Foot Anchors Grout-ITW, ITE Handrails	2.5 days									
4		Shielding Blocks Move-ITW to ITE	0.5 days									
5		TM1-TM2-TM4 Target Hall Activities	61 days									
6		TM1 UCx Ready for Beam at ITW	8 days									
7		New Ucx Target in SHC/Cameras set up	0.2 days									
8		Moduel Move-TM1-Silo to SHC	0.2 days									
9		Ucx target install /Leak , Electrical Check at SHC	0.2 days									
10		Module Move- TM1 -SHC to CS	0.2 days									
11		TM1 Vacuum Connect at CS/ CS Pump Down	0.2 days									
12		Heium Pressure Test-TM1 HS line at CS	0.5 days									
13		TM1 Connect at CS/HV Cover Installed	0.5 days									
14		Module Conditioning-TM1 at CS	4.5 days									
15		Finish of Conditioning/Module Disconnect -TM1 at CS	0.5 days									
16		Argon Vent CS /ITW cameras Set up/Shield Plug Move from ITW	0.25 days									
17		Module Move -TM1-CS to ITW	0.25 days									
18		Module Connect-TM1 at ITW/Start of Turbopumps	0.5 days									
19		TM2 Refurbishment Completion	61 days									
20		TM2 Top Service Cap Reconfiguration	3 days									
21		Module Move -TM2-Silo to ITW	1 day									
22		TM2 Wiring Prepare/Work Area Set up in TH	1 day									
23		TM2 Wiring - SHC & TM2 Service Cap	2 days									
24		Module Move-TM2-SHC to CS	1 day									
25		TM2 wiring-TM2 at CS	1 day									
26		Module move-TM2 -CS to Silo	1 day									
27		Source Tray Install on Transfer Table/Transfer Source Tray into SHC	1 day									
28		Remove Transfer table-SHC to TH/Clean up	0.5 days									
29		Dummy Target Insert to SHC	0.5 days									
30		Module Move- TM2 -Silo to SHC	1 day									
31		Leak, Electrical Check-TM2 at SHC	1 day									
32		Module Move-TM2-SHC to CS/ Start of CS Pumps	1 day									
33		Helium Pressure Test -TM2 water lines at CS/TM2 Connect at CS	1 day									
34		TM2 Test at CS	7 days									
35		TM2 Fully Operational/Complete TM2 Refurbishment	1 day									
36		TM4 HpSiC Ready for Beam at ITE	21 days									
37		Shielding Blocks Move-ITE to ITW	1 day									
38		New HP SiC Target in SHC	1 day									
39		Cameras set up/Module Move-TM4 -ITE to SHC	0.5 days									



Project: Target Hall Scheduled Act
Date: Tue 6/2/15

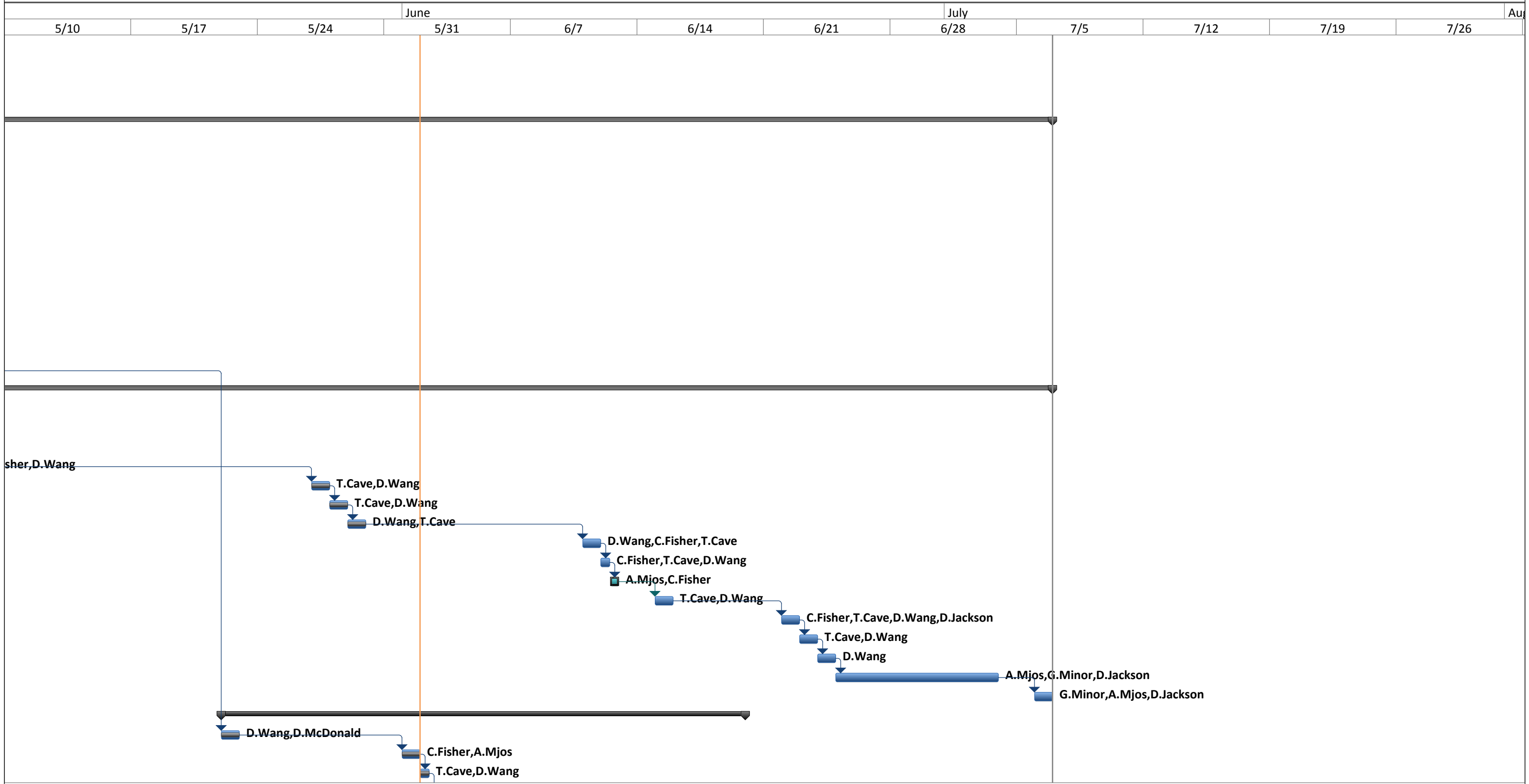
Task		Project Summary		Inactive Milestone		Manual Summary Rollup		Deadline	
Split		External Tasks		Inactive Summary		Manual Summary		Progress	
Milestone		External Milestone		Manual Task		Start-only			
Summary		Inactive Task		Duration-only		Finish-only			

Target Hall Scheduled Activities 2015-04-07 to 2015 06-26

ID	Task Mode	Task Name	Duration	April					May			
				3/29	4/5	4/12	4/19	4/26	5/3	5/10		
40		New SiC Target Install/Electrical,vacuum Check	0.5 days									
41		Module Move-TM4-SHC to CS/Start of CS Turbo Pumps	1 day									
42		Spent Target Move -HPTa-SHC to Storage Vault	0.5 days									
43		Helium Pressure Test/Connect TM4 At CS/HV Cover on	0.5 days									
44		Module Conditioning-TM4 at CS	2.5 days									
45		Finish of Conditioning/Module Disconnect -TM4 at CS	0.5 days									
46		Module Move -TM4-CS to ITE	0.5 days									
47		Module Connect-TM4 at ITW/Start of ITE Turbopumps	0.5 days									
48		Shielding Blocks Move-ITW to ITE/ ITE Ready for Proton Beam	1 day									

Project: Target Hall Scheduled Act
Date: Tue 6/2/15

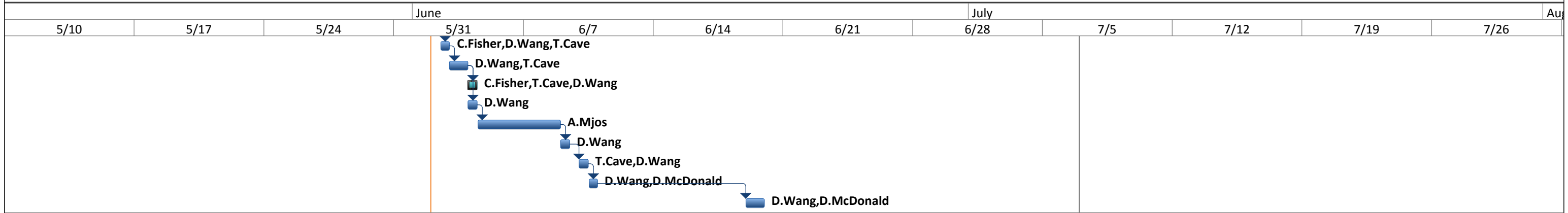
Task		Project Summary		Inactive Milestone		Manual Summary Rollup		Deadline	
Split		External Tasks		Inactive Summary		Manual Summary		Progress	
Milestone		External Milestone		Manual Task		Start-only			
Summary		Inactive Task		Duration-only		Finish-only			



Project: Target Hall Scheduled Act
Date: Tue 6/2/15

Task		Project Summary		Inactive Milestone		Manual Summary Rollup		Deadline	
Split		External Tasks		Inactive Summary		Manual Summary		Progress	
Milestone		External Milestone		Manual Task		Start-only			
Summary		Inactive Task		Duration-only		Finish-only			

Target Hall Scheduled Activities 2015-04-07 to 2015 06-26



Project: Target Hall Scheduled Act
Date: Tue 6/2/15

Task		Project Summary		Inactive Milestone		Manual Summary Rollup		Deadline	
Split		External Tasks		Inactive Summary		Manual Summary		Progress	
Milestone		External Milestone		Manual Task		Start-only			
Summary		Inactive Task		Duration-only		Finish-only			