

Target Hall Scheduled Activities 2015-04-07 to 2015 06-26

| ID | Task Mode | Task Name                       | Duration       | Start              | Finish             | Predecessors | Resource Names        | Apr 5, '15 |   |   |   | Apr 12, '15 |   |   | Apr 19, '15 |   |   |   | Apr 26, '15 |   |   | May 3 |
|----|-----------|---------------------------------|----------------|--------------------|--------------------|--------------|-----------------------|------------|---|---|---|-------------|---|---|-------------|---|---|---|-------------|---|---|-------|
|    |           |                                 |                |                    |                    |              |                       | S          | M | W | F | S           | T | T | S           | M | W | F | S           | T | T | S     |
| 1  | ▶         | <b>TM4 Ta#45 ready for Bear</b> | 4 days         | <b>Tue 4/7/15</b>  | <b>Fri 4/10/15</b> |              |                       |            |   |   |   |             |   |   |             |   |   |   |             |   |   |       |
| 2  | ▶         | Grounding Test-ITW, ITE         | 1 day          | Tue 4/7/15         | Tue 4/7/15         |              |                       |            |   |   |   |             |   |   |             |   |   |   |             |   |   |       |
| 3  | ▶         | Foot Anchors Grout-ITW          | 2.5 days       | Wed 4/8/15         | Fri 4/10/15        | 2            |                       |            |   |   |   |             |   |   |             |   |   |   |             |   |   |       |
| 4  | ▶         | Shielding Blocks Move-I'        | 0.5 days       | Fri 4/10/15        | Fri 4/10/15        | 3            |                       |            |   |   |   |             |   |   |             |   |   |   |             |   |   |       |
| 5  | ▶         | <b>TM1-TM2-TM4 Target Hal</b>   | <b>55 days</b> | <b>Mon 4/13/15</b> | <b>Fri 6/26/15</b> |              |                       |            |   |   |   |             |   |   |             |   |   |   |             |   |   |       |
| 6  | ▶         | <b>TM1 UCx Ready for Be</b>     | <b>8 days</b>  | <b>Fri 4/17/15</b> | <b>Tue 4/28/15</b> |              |                       |            |   |   |   |             |   |   |             |   |   |   |             |   |   |       |
| 7  | ▶         | New Ucx Target in SH            | 0.2 days       | Fri 4/17/15        | Fri 4/17/15        |              | A.Mjos,I.Earle,T.Cave |            |   |   |   |             |   |   |             |   |   |   |             |   |   |       |
| 8  | ▶         | Moduel Move-TM1-S               | 0.2 days       | Fri 4/17/15        | Fri 4/17/15        | 7            | T.Cave,D.Wang         |            |   |   |   |             |   |   |             |   |   |   |             |   |   |       |
| 9  | ▶         | Ucx target install /Lea         | 0.2 days       | Fri 4/17/15        | Fri 4/17/15        | 8            | I.Earle,T.Cave,D.W    |            |   |   |   |             |   |   |             |   |   |   |             |   |   |       |
| 10 | ▶         | Module Move- TM1 -              | 0.2 days       | Fri 4/17/15        | Fri 4/17/15        | 9            | D.Wang,T.Cave         |            |   |   |   |             |   |   |             |   |   |   |             |   |   |       |
| 11 | ▶         | TM1 Vacuum Connec               | 0.2 days       | Fri 4/17/15        | Fri 4/17/15        | 10           | D.Wang                |            |   |   |   |             |   |   |             |   |   |   |             |   |   |       |
| 12 | ▶         | Heium Pressure Test-            | 0.5 days       | Mon 4/20/15        | Mon 4/20/15        | 11           | D.Wang                |            |   |   |   |             |   |   |             |   |   |   |             |   |   |       |
| 13 | ▶         | TM1 Connect at CS/I             | 0.5 days       | Mon 4/20/15        | Mon 4/20/15        | 12           | D.Wang,D.McDona       |            |   |   |   |             |   |   |             |   |   |   |             |   |   |       |
| 14 | ▶         | Module Conditioning             | 4.5 days       | Tue 4/21/15        | Mon 4/27/15        | 13           | A.Mjos                |            |   |   |   |             |   |   |             |   |   |   |             |   |   |       |
| 15 | ▶         | Finish of Conditioning          | 0.5 days       | Mon 4/27/15        | Mon 4/27/15        | 14           | D.Wang                |            |   |   |   |             |   |   |             |   |   |   |             |   |   |       |
| 16 | ▶         | Argon Vent CS /ITW c            | 0.25 days      | Tue 4/28/15        | Tue 4/28/15        | 15           | D.Wang,T.Cave         |            |   |   |   |             |   |   |             |   |   |   |             |   |   |       |
| 17 | ▶         | Module Move -TM1-(              | 0.25 days      | Tue 4/28/15        | Tue 4/28/15        | 16           | D.Wang,T.Cave         |            |   |   |   |             |   |   |             |   |   |   |             |   |   |       |
| 18 | ▶         | Module Connect-TM1              | 0.5 days       | Tue 4/28/15        | Tue 4/28/15        | 17           | D.Wang,D.McDona       |            |   |   |   |             |   |   |             |   |   |   |             |   |   |       |
| 19 | ▶         | <b>TM2 Refurbishment Co</b>     | <b>55 days</b> | <b>Mon 4/13/15</b> | <b>Fri 6/26/15</b> |              |                       |            |   |   |   |             |   |   |             |   |   |   |             |   |   |       |
| 20 | ▶         | TM2 Top Service Cap             | 3 days         | Mon 4/13/15        | Wed 4/15/15        |              | D.Wang                |            |   |   |   |             |   |   |             |   |   |   |             |   |   |       |
| 21 | ▶         | Module Move -TM2-S              | 1 day          | Thu 4/30/15        | Thu 4/30/15        |              | T.Cave,D.Wang         |            |   |   |   |             |   |   |             |   |   |   |             |   |   |       |
| 22 | ▶         | TM2 Wiring Prepare/             | 1 day          | Fri 5/1/15         | Fri 5/1/15         | 21           | D.Wang,T.Cave         |            |   |   |   |             |   |   |             |   |   |   |             |   |   |       |
| 23 | ▶         | TM2 Wiring - SHC & T            | 2 days         | Mon 5/4/15         | Tue 5/5/15         | 22           | T.Cave,C.Fisher,D.V   |            |   |   |   |             |   |   |             |   |   |   |             |   |   |       |
| 24 | ▶         | Module Move-TM2-S               | 1 day          | Wed 5/6/15         | Wed 5/6/15         | 23           | T.Cave,D.Wang         |            |   |   |   |             |   |   |             |   |   |   |             |   |   |       |
| 25 | ▶         | Source Tray Install on          | 1 day          | Thu 5/7/15         | Thu 5/7/15         | 24           | D.Wang,C.Fisher,T.    |            |   |   |   |             |   |   |             |   |   |   |             |   |   |       |
| 26 | ▶         | TM2 Wiring- CS & Ser            | 2 days         | Fri 5/8/15         | Mon 5/11/15        | 25,20        | T.Cave,D.Jackson,D    |            |   |   |   |             |   |   |             |   |   |   |             |   |   |       |
| 27 | ▶         | Remove Transfer tabl            | 1 day          | Tue 5/12/15        | Tue 5/12/15        | 25           | C.Fisher,T.Cave,D.V   |            |   |   |   |             |   |   |             |   |   |   |             |   |   |       |
| 28 | ▶         | TM2 Wiring-CS & Ser             | 1 day          | Wed 5/13/15        | Wed 5/13/15        | 27           | T.Cave,D.Jackson,D    |            |   |   |   |             |   |   |             |   |   |   |             |   |   |       |
| 29 | ▶         | Module Move- TM2 -              | 1 day          | Thu 5/14/15        | Thu 5/14/15        | 28           | T.Cave,D.Wang         |            |   |   |   |             |   |   |             |   |   |   |             |   |   |       |
| 30 | ▶         | Leak, Electrical Check          | 1 day          | Mon 5/25/15        | Mon 5/25/15        | 29           | C.Fisher,T.Cave,D.V   |            |   |   |   |             |   |   |             |   |   |   |             |   |   |       |
| 31 | ▶         | Module Move-TM2-S               | 1 day          | Tue 5/26/15        | Tue 5/26/15        | 30           | T.Cave,D.Wang         |            |   |   |   |             |   |   |             |   |   |   |             |   |   |       |
| 32 | ▶         | Helium Pressure Test            | 2 days         | Wed 5/27/15        | Thu 5/28/15        | 31           | D.Wang                |            |   |   |   |             |   |   |             |   |   |   |             |   |   |       |
| 33 | ▶         | Module Move -TM2-(              | 1 day          | Fri 5/29/15        | Fri 5/29/15        | 32           | D.Wang,T.Cave         |            |   |   |   |             |   |   |             |   |   |   |             |   |   |       |
| 34 | ▶         | TM2 Dummy Target I              | 0.5 days       | Thu 6/11/15        | Thu 6/11/15        | 33,51        | C.Fisher,A.Mjos       |            |   |   |   |             |   |   |             |   |   |   |             |   |   |       |
| 35 | ▶         | Module Move-TM2-S               | 0.5 days       | Thu 6/11/15        | Thu 6/11/15        | 34           | T.Cave,D.Wang         |            |   |   |   |             |   |   |             |   |   |   |             |   |   |       |
| 36 | ▶         | Dummy Target Install            | 0.5 days       | Fri 6/12/15        | Fri 6/12/15        | 35           | C.Fisher,T.Cave,D.V   |            |   |   |   |             |   |   |             |   |   |   |             |   |   |       |
| 37 | ▶         | Module Move- TM2 -              | 0.5 days       | Fri 6/12/15        | Fri 6/12/15        | 36           | D.Wang,T.Cave         |            |   |   |   |             |   |   |             |   |   |   |             |   |   |       |
| 38 | ▶         | Helium Pressure Test            | 1 day          | Tue 6/16/15        | Tue 6/16/15        | 37           | D.Wang                |            |   |   |   |             |   |   |             |   |   |   |             |   |   |       |
| 39 | ▶         | TM2 Test at CS                  | 7 days         | Wed 6/17/15        | Thu 6/25/15        | 38           | A.Mjos,G.Minor,D.     |            |   |   |   |             |   |   |             |   |   |   |             |   |   |       |

Project: Target Hall Scheduled Act  
Date: Mon 4/27/15

|           |  |                    |  |                    |  |                       |  |          |  |
|-----------|--|--------------------|--|--------------------|--|-----------------------|--|----------|--|
| Task      |  | Project Summary    |  | Inactive Milestone |  | Manual Summary Rollup |  | Deadline |  |
| Split     |  | External Tasks     |  | Inactive Summary   |  | Manual Summary        |  | Progress |  |
| Milestone |  | External Milestone |  | Manual Task        |  | Start-only            |  |          |  |
| Summary   |  | Inactive Task      |  | Duration-only      |  | Finish-only           |  |          |  |

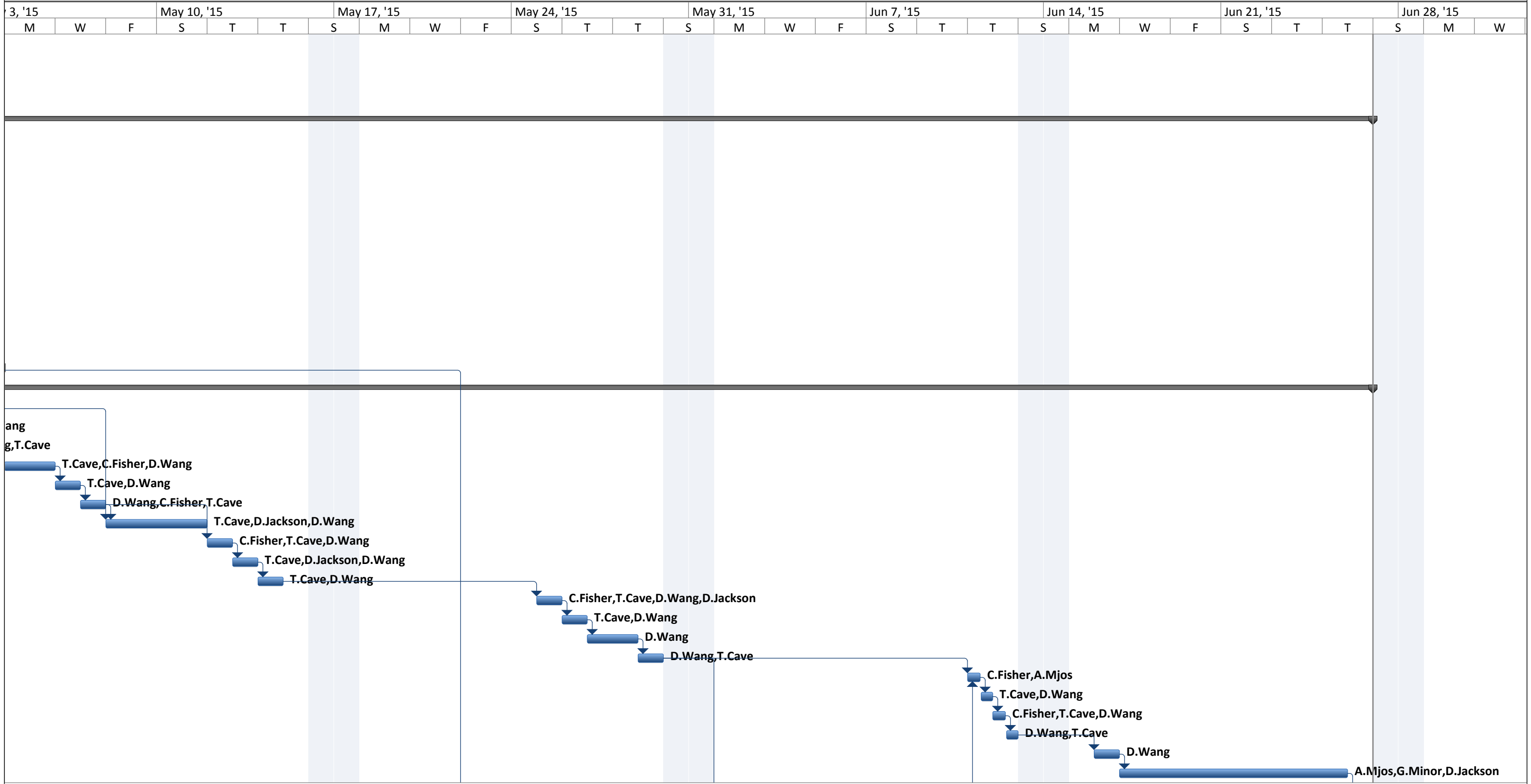
Target Hall Scheduled Activities 2015-04-07 to 2015 06-26

| ID | Task Mode | Task Name                    | Duration       | Start              | Finish             | Predecessors | Resource Names     | Apr 5, '15 |   |   |   | Apr 12, '15 |   |   | Apr 19, '15 |   |   |   | Apr 26, '15 |   |   | May 3 |
|----|-----------|------------------------------|----------------|--------------------|--------------------|--------------|--------------------|------------|---|---|---|-------------|---|---|-------------|---|---|---|-------------|---|---|-------|
|    |           |                              |                |                    |                    |              |                    | S          | M | W | F | S           | T | T | S           | M | W | F | S           | T | T | S     |
| 40 |           | TM2 Fully Operational        | 1 day          | Fri 6/26/15        | Fri 6/26/15        | 39           |                    |            |   |   |   |             |   |   |             |   |   |   |             |   |   |       |
| 41 |           | <b>TM4 HpSiC Ready for B</b> | <b>21 days</b> | <b>Fri 5/22/15</b> | <b>Fri 6/19/15</b> |              |                    |            |   |   |   |             |   |   |             |   |   |   |             |   |   |       |
| 42 |           | Shielding Blocks Move        | 1 day          | Fri 5/22/15        | Fri 5/22/15        | 18           | D.Wang,D.McDona    |            |   |   |   |             |   |   |             |   |   |   |             |   |   |       |
| 43 |           | New HP SiC Target in         | 1 day          | Mon 6/1/15         | Mon 6/1/15         | 33           | C.Fisher,A.Mjos    |            |   |   |   |             |   |   |             |   |   |   |             |   |   |       |
| 44 |           | Cameras set up/Mod           | 0.5 days       | Tue 6/2/15         | Tue 6/2/15         | 43           | T.Cave,D.Wang      |            |   |   |   |             |   |   |             |   |   |   |             |   |   |       |
| 45 |           | New SiC Target Instal        | 0.5 days       | Tue 6/2/15         | Tue 6/2/15         | 44           | C.Fisher,D.Wang,T. |            |   |   |   |             |   |   |             |   |   |   |             |   |   |       |
| 46 |           | Module Move-TM4-S            | 1 day          | Wed 6/3/15         | Wed 6/3/15         | 45           | D.Wang,T.Cave      |            |   |   |   |             |   |   |             |   |   |   |             |   |   |       |
| 47 |           | Helium Pressure Test         | 0.5 days       | Thu 6/4/15         | Thu 6/4/15         | 46           | D.Wang             |            |   |   |   |             |   |   |             |   |   |   |             |   |   |       |
| 48 |           | Module Conditioning          | 3 days         | Thu 6/4/15         | Tue 6/9/15         | 47           | A.Mjos             |            |   |   |   |             |   |   |             |   |   |   |             |   |   |       |
| 49 |           | Finish of Conditioning       | 0.5 days       | Tue 6/9/15         | Tue 6/9/15         | 48           | D.Wang             |            |   |   |   |             |   |   |             |   |   |   |             |   |   |       |
| 50 |           | Module Move -TM4-            | 0.5 days       | Wed 6/10/15        | Wed 6/10/15        | 49           | T.Cave,D.Wang      |            |   |   |   |             |   |   |             |   |   |   |             |   |   |       |
| 51 |           | Module Connect-TM            | 0.5 days       | Wed 6/10/15        | Wed 6/10/15        | 50           | D.Wang,D.McDona    |            |   |   |   |             |   |   |             |   |   |   |             |   |   |       |
| 52 |           | Shielding Blocks Move        | 1 day          | Fri 6/19/15        | Fri 6/19/15        | 51           | D.Wang,D.McDona    |            |   |   |   |             |   |   |             |   |   |   |             |   |   |       |

Project: Target Hall Scheduled Act  
Date: Mon 4/27/15

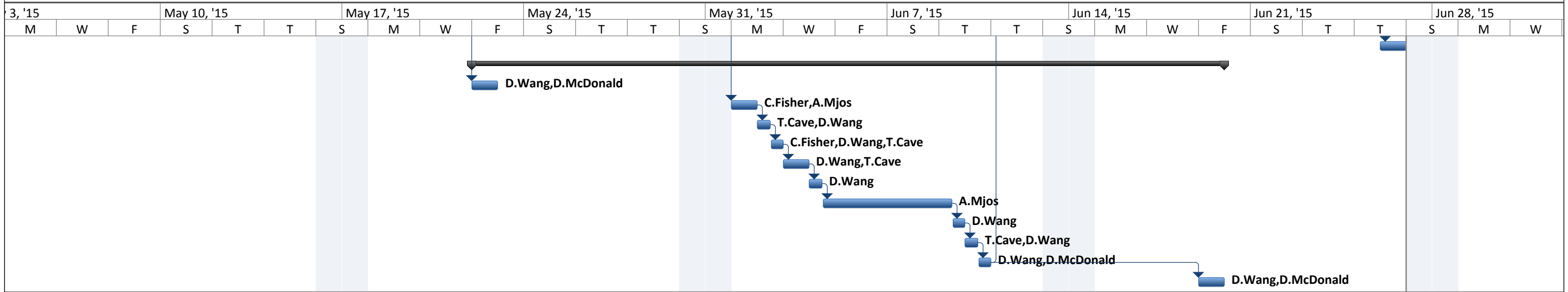
|           |  |                    |  |                    |  |                       |  |          |  |
|-----------|--|--------------------|--|--------------------|--|-----------------------|--|----------|--|
| Task      |  | Project Summary    |  | Inactive Milestone |  | Manual Summary Rollup |  | Deadline |  |
| Split     |  | External Tasks     |  | Inactive Summary   |  | Manual Summary        |  | Progress |  |
| Milestone |  | External Milestone |  | Manual Task        |  | Start-only            |  |          |  |
| Summary   |  | Inactive Task      |  | Duration-only      |  | Finish-only           |  |          |  |

Target Hall Scheduled Activities 2015-04-07 to 2015 06-26



|   |           |  |                    |  |                    |  |                       |  |          |  |
|---|-----------|--|--------------------|--|--------------------|--|-----------------------|--|----------|--|
| Project: Target Hall Scheduled Act<br>Date: Mon 4/27/15 | Task      |  | Project Summary    |  | Inactive Milestone |  | Manual Summary Rollup |  | Deadline |  |
|   | Split     |  | External Tasks     |  | Inactive Summary   |  | Manual Summary        |  | Progress |  |
|   | Milestone |  | External Milestone |  | Manual Task        |  | Start-only            |  |          |  |
|   | Summary   |  | Inactive Task      |  | Duration-only      |  | Finish-only           |  |          |  |

Target Hall Scheduled Activities 2015-04-07 to 2015 06-26



|   |           |  |                    |  |                    |  |                       |  |          |  |
|---|-----------|--|--------------------|--|--------------------|--|-----------------------|--|----------|--|
| Project: Target Hall Scheduled Act<br>Date: Mon 4/27/15 | Task      |  | Project Summary    |  | Inactive Milestone |  | Manual Summary Rollup |  | Deadline |  |
|   | Split     |  | External Tasks     |  | Inactive Summary   |  | Manual Summary        |  | Progress |  |
|   | Milestone |  | External Milestone |  | Manual Task        |  | Start-only            |  |          |  |
|   | Summary   |  | Inactive Task      |  | Duration-only      |  | Finish-only           |  |          |  |