

ISAC Target Hall Schedule-Feb 23 to Apr15

By David Wang

Updated 27-Feb-2015

ID	Task Mode	Task Name	Duration	Start	Feb 22, '15				Mar 1, '15			Mar 8, '15				Mar 15, '15			Mar 22, '15				Mar 29, '15			Apr 5, '15				Apr 12, '15		
					S	M	W	F	S	T	T	S	M	W	F	S	T	T	S	M	W	F	S	T	T	S	M	W	F	S	T	T
1	✓	Pre- Module Move	9 days	Mon 2/23/15	[Gantt bar for Pre- Module Move]																											
2	✓	Pedal Wheels and Coils Replacement- ITE	1 day	Mon 2/23/15	[Gantt bar for Pedal Wheels and Coils Replacement- ITE]																											
3	✓	Storage of 6 old Turbo Pumps to Cyclotron Vault	1 day	Tue 2/24/15	[Gantt bar for Storage of 6 old Turbo Pumps to Cyclotron Vault]																											
4	✓	Pedal wheels and Coils Replacement-ITW	1 day	Wed 2/25/15	[Gantt bar for Pedal wheels and Coils Replacement-ITW]																											
5	✓	Primary and Secondary Vacuum Vessel Leak Check-ITE	3 days	Mon 3/2/15	[Gantt bar for Primary and Secondary Vacuum Vessel Leak Check-ITE]																											
6	✓	5 Shielding Block Move-Storage Area to ITE	1 day	Thu 3/5/15	[Gantt bar for 5 Shielding Block Move-Storage Area to ITE]																											
7	✓	TM1 Move/Spent Target	5 days	Mon 3/9/15	[Gantt bar for TM1 Move/Spent Target]																											
8	✓	Cameras Set up-ITW	0.25 days	Mon 3/9/15	[Gantt bar for Cameras Set up-ITW]																											
9	✓	Module Move-TM1-ITW to SHC	0.25 days	Mon 3/9/15	[Gantt bar for Module Move-TM1-ITW to SHC]																											
10	✓	Target Removal/Electrical Check-TM1-ThO-SHC	0.5 days	Mon 3/9/15	[Gantt bar for Target Removal/Electrical Check-TM1-ThO-SHC]																											
11	✓	Module Move-TM1-SHC to Silo	0.5 days	Tue 3/10/15	[Gantt bar for Module Move-TM1-SHC to Silo]																											
12	✓	RPG Test on TM1 ThO Target	1.5 days	Tue 3/10/15	[Gantt bar for RPG Test on TM1 ThO Target]																											
13	✓	ThO Target Autopsy/Shielding Blocks Move-ITE to ITW/Cameras Set up -ITE	1 day	Thu 3/12/15	[Gantt bar for ThO Target Autopsy/Shielding Blocks Move-ITE to ITW/Cameras Set up -ITE]																											
14	✓	Spent Target Move-ThO-SHC to Vault/Argon Vent ITE	0.5 days	Fri 3/13/15	[Gantt bar for Spent Target Move-ThO-SHC to Vault/Argon Vent ITE]																											
15	✓	Module Move-TM2-CS to Silo	0.5 days	Fri 3/13/15	[Gantt bar for Module Move-TM2-CS to Silo]																											
16		TM4 Move/Spent Target	3 days	Mon 3/16/15	[Gantt bar for TM4 Move/Spent Target]																											
17		Module Move-TM4-ITE to SHC	0.5 days	Mon 3/16/15	[Gantt bar for Module Move-TM4-ITE to SHC]																											
18		Target Removal/Electrical Check-TM4-UCx-SHC	0.5 days	Mon 3/16/15	[Gantt bar for Target Removal/Electrical Check-TM4-UCx-SHC]																											
19		Module Move-TM4 -SHC to CS	1 day	Tue 3/17/15	[Gantt bar for Module Move-TM4 -SHC to CS]																											

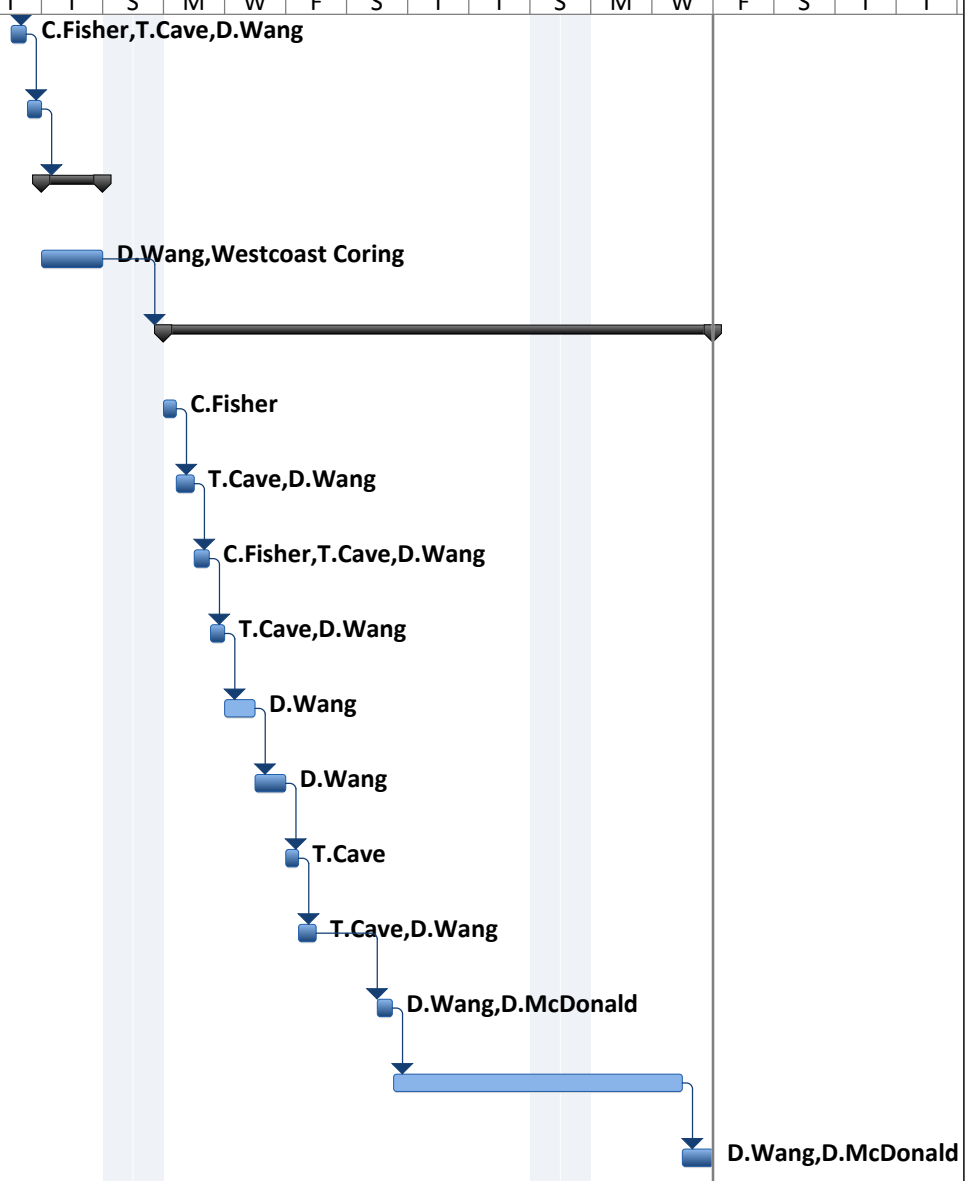
Project: Target Hall shut down act
Date: Fri 3/13/15

Task		Project Summary		Inactive Milestone		Manual Summary Rollup		Deadline	
Split		External Tasks		Inactive Summary		Manual Summary		Progress	
Milestone		External Milestone		Manual Task		Start-only			
Summary		Inactive Task		Duration-only		Finish-only			

ISAC Target Hall Schedule-Feb 23 to Apr15

By David Wang
Updated 27-Feb-2015

ID	Task Mode	Task Name	Duration	Start	Feb 22, '15				Mar 1, '15			Mar 8, '15				Mar 15, '15			Mar 22, '15				Mar 29, '15			Apr 5, '15			Apr 12, '15																	
					S	M	W	F	S	T	T	S	M	W	F	S	T	T	S	M	W	F	S	T	T	S	M	W	F	S	T	T														
20		Spent Target Move-UCx-SHC to Vault	0.5 days	Wed 3/18/15																																										
21		Preparation-New Holes Coring	0.5 days	Wed 3/18/15																																										
22		Handrail Holes Coring	2 days	Thu 3/19/15																																										
23		New Holes Coring-Westcoast coring/ Shielding Blocks to ITE	2 days	Thu 3/19/15																																										
24		First HP Ta Surface Target on TM4 Ready for ITE	12 days	Mon 3/23/15																																										
25		HP Ta Surface Target Insert into SHC	0.25 days	Mon 3/23/15																																										
26		Module Move-TM4-CS to SHC	0.75 days	Mon 3/23/15																																										
27		Target Installation-TM4-HP Ta/Leak Check/Electrical Check	0.5 days	Tue 3/24/15																																										
28		Module Move-TM4-SHC to CS	0.5 days	Tue 3/24/15																																										
29		Connect and Pump down -TM4 at CS	1 day	Wed 3/25/15																																										
30		TM4 Leak Check/Helium pressure test- TM4 at CS	1 day	Thu 3/26/15																																										
31		Cameras Set up-ITE/TM4 and CS Venting	0.25 days	Fri 3/27/15																																										
32		Module Move-TM4-CS to ITE	0.75 days	Fri 3/27/15																																										
33		Connect and Pump down -TM4 at ITE	0.5 days	Mon 3/30/15																																										
34		Pump down/ Conditioning- TM4 at ITE	5.5 days	Mon 3/30/15																																										
35		5 Shielding Blocks Move-Storage Area to ITE/ ITE Ready	1 day	Thu 4/9/15																																										



Project: Target Hall shut down act Date: Fri 3/13/15	Task		Project Summary		Inactive Milestone		Manual Summary Rollup		Deadline	
	Split		External Tasks		Inactive Summary		Manual Summary		Progress	
	Milestone		External Milestone		Manual Task		Start-only			
	Summary		Inactive Task		Duration-only		Finish-only			