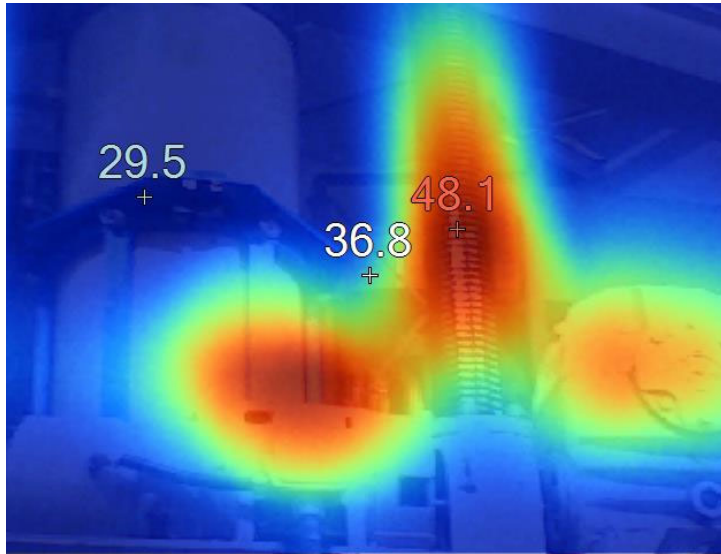
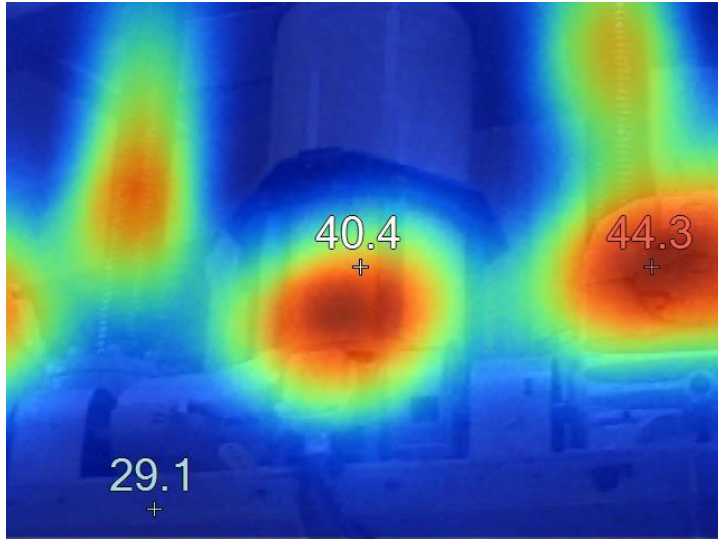

Lid Up 2025 Thermal Imaging
Prepared by: Remote Handling Group
2025-01-28



Station 1
1/28/2025 1:02:30 PM

Main Image Markers

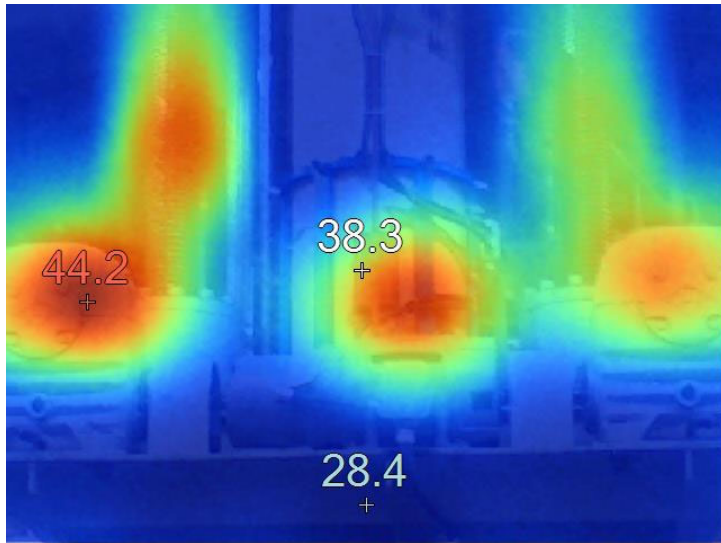
Name	Temperature	Background
Centerpoint	36.8°C	21.0°C
Hot	48.1°C	21.0°C
Cold	29.5°C	21.0°C



Station 2
1/28/2025 1:03:30 PM

Main Image Markers

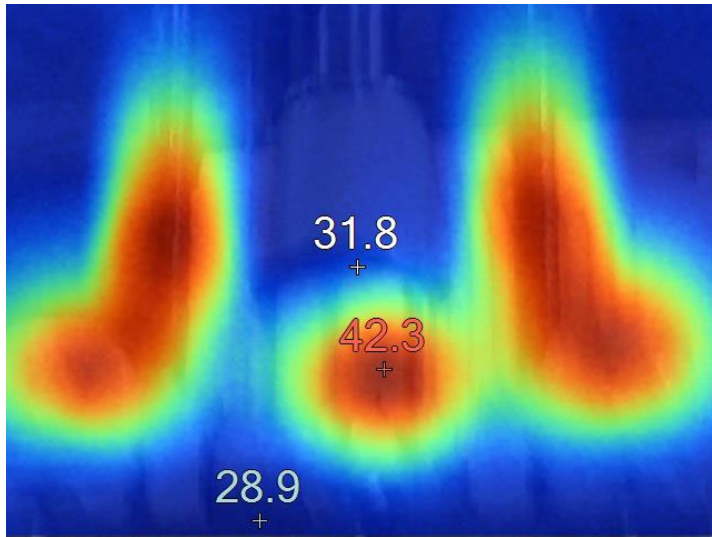
Name	Temperature	Background
Centerpoint	40.4°C	21.0°C
Hot	44.3°C	21.0°C
Cold	29.1°C	21.0°C



Station 3
1/28/2025 1:04:02 PM

Main Image Markers

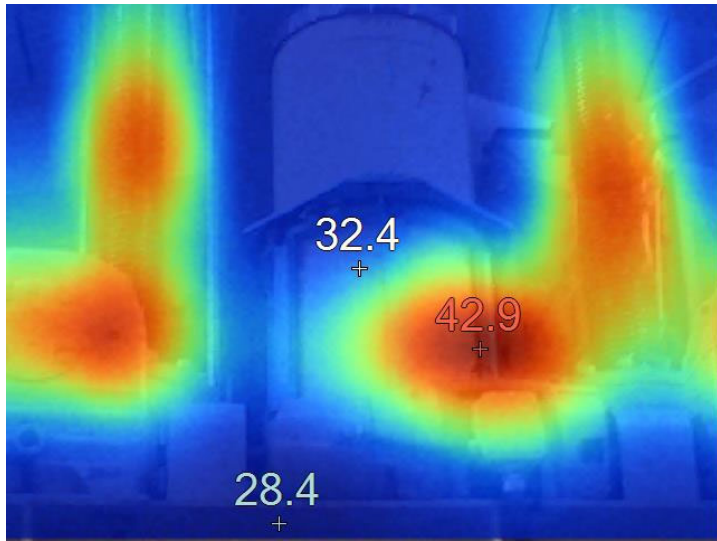
Name	Temperature	Background
Centerpoint	38.3°C	21.0°C
Hot	44.2°C	21.0°C
Cold	28.4°C	21.0°C



Station 4
1/28/2025 1:04:39 PM

Main Image Markers

Name	Temperature	Background
Centerpoint	31.8°C	21.0°C
Hot	42.3°C	21.0°C
Cold	28.9°C	21.0°C

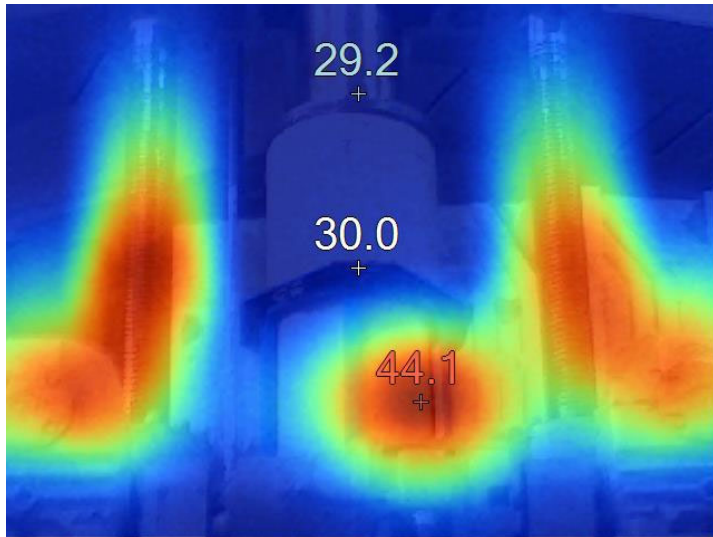


Station 5

1/28/2025 1:05:00 PM

Main Image Markers

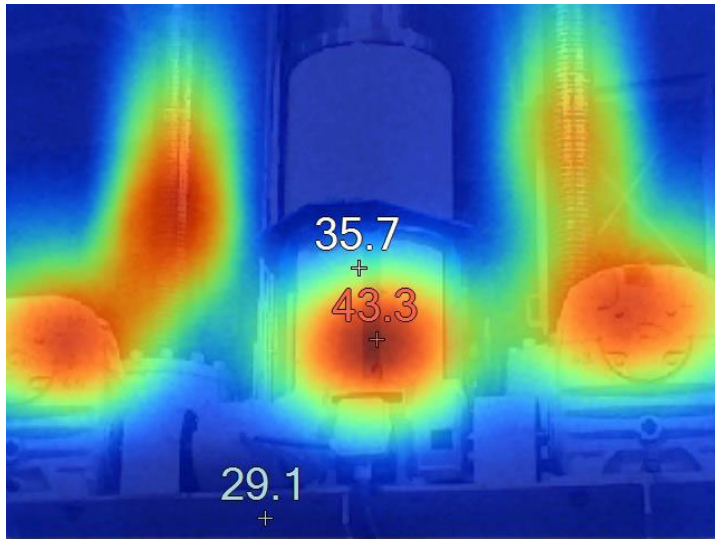
Name	Temperature	Background
Centerpoint	32.4°C	21.0°C
Hot	42.9°C	21.0°C
Cold	28.4°C	21.0°C



Station 6
1/28/2025 1:05:18 PM

Main Image Markers

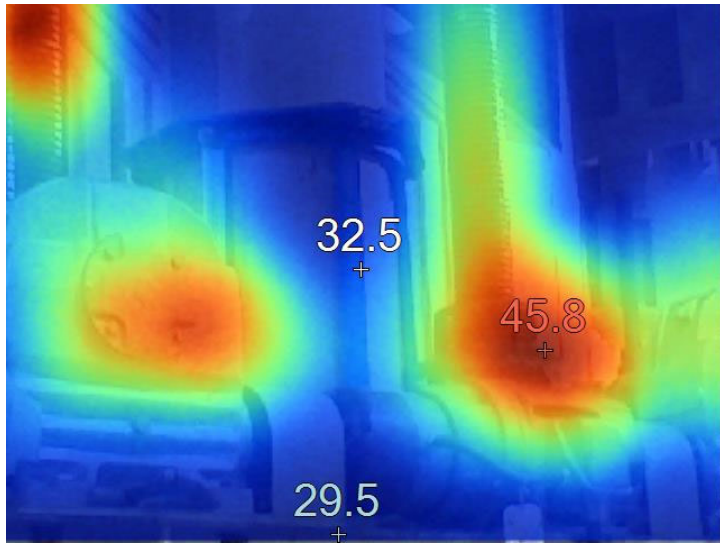
Name	Temperature	Background
Centerpoint	30.0°C	21.0°C
Hot	44.1°C	21.0°C
Cold	29.2°C	21.0°C



Station 7
1/28/2025 1:05:36 PM

Main Image Markers

Name	Temperature	Background
Centerpoint	35.7°C	21.0°C
Hot	43.3°C	21.0°C
Cold	29.1°C	21.0°C

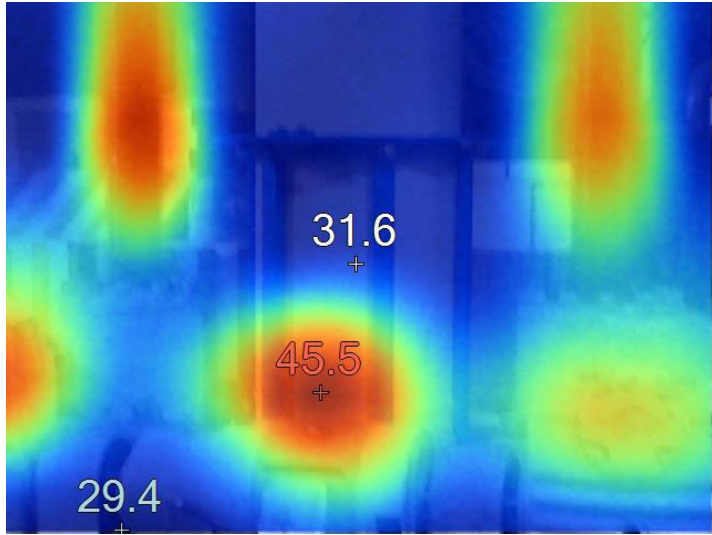


Station 8

1/28/2025 1:06:22 PM

Main Image Markers

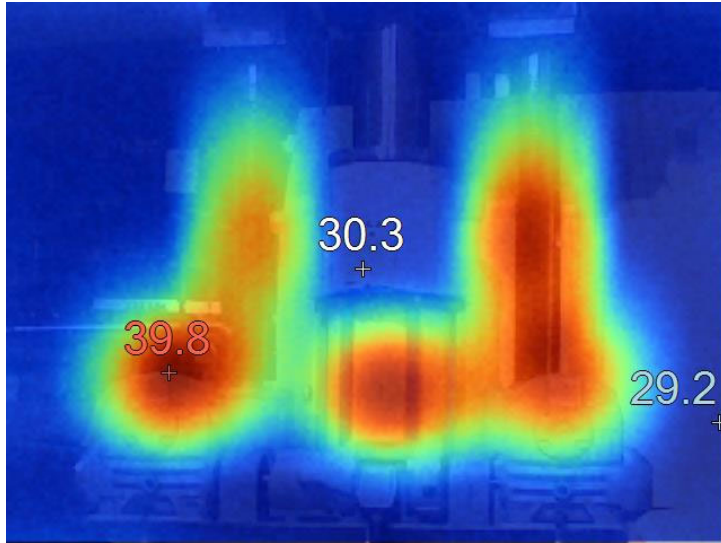
Name	Temperature	Background
Centerpoint	32.5°C	21.0°C
Hot	45.8°C	21.0°C
Cold	29.5°C	21.0°C



Station 9
1/28/2025 1:06:41 PM

Main Image Markers

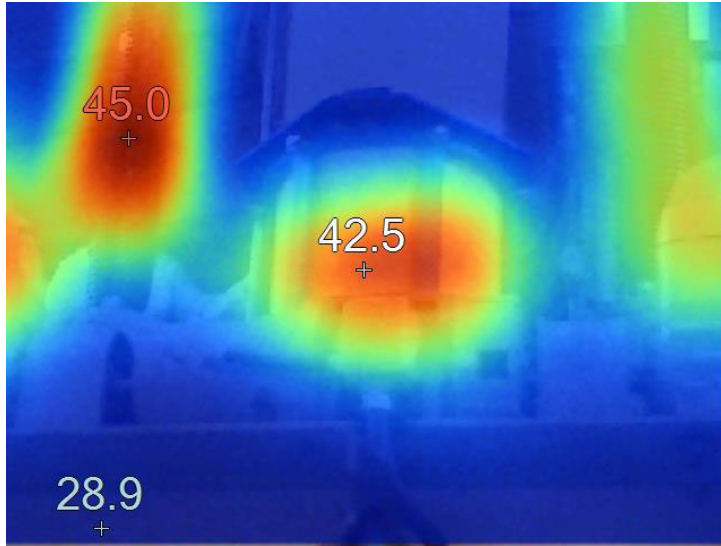
Name	Temperature	Background
Centerpoint	31.6°C	21.0°C
Hot	45.5°C	21.0°C
Cold	29.4°C	21.0°C



Station 10
1/28/2025 1:07:04 PM

Main Image Markers

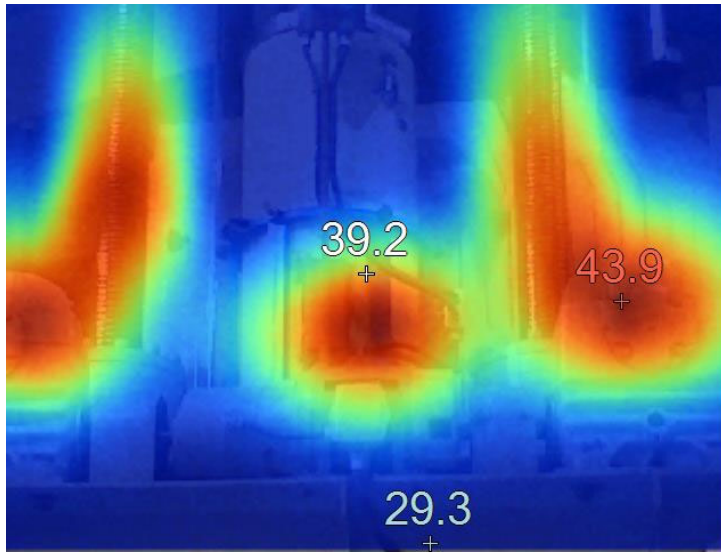
Name	Temperature	Background
Centerpoint	30.3°C	21.0°C
Hot	39.8°C	21.0°C
Cold	29.2°C	21.0°C



Station 11
1/28/2025 1:07:24 PM

Main Image Markers

Name	Temperature	Background
Centerpoint	42.5°C	21.0°C
Hot	45.0°C	21.0°C
Cold	28.9°C	21.0°C



Station 12
1/28/2025 1:07:45 PM

Main Image Markers

Name	Temperature	Background
Centerpoint	39.2°C	21.0°C
Hot	43.9°C	21.0°C
Cold	29.3°C	21.0°C