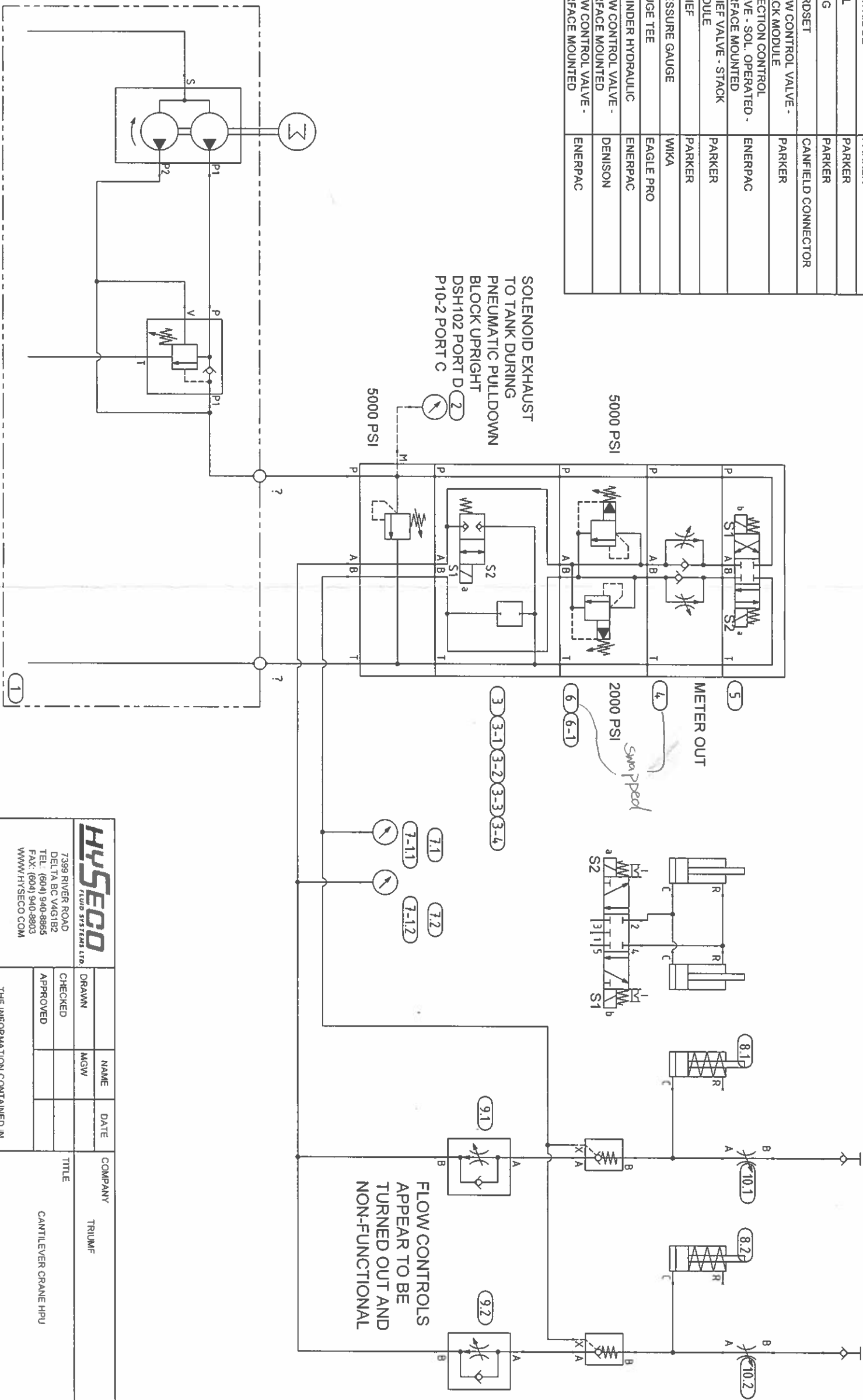


ITEM ID	QUANTITY	MODEL CODE	DESCRIPTION	MANUFACTURER
1	1	ZW2408EB	POWER UNIT	ENERPAC
2	1	21353-25-06000B	PRESSURE GAUGE	WIKA
3	1	BD03ABTS	DIRECTION CONTROL VALVE - SOL. OPERATED - SURFACE MOUNTED	PARKER
3-1	1	DSH102C	CARTRIDGE	PARKER
3-2	1	CAP115D	COIL	PARKER
3-3	1	P10-2	PLUG	PARKER
3-4	1	5J6F4-501-US0A	CORDSSET	CANFIELD CONNECTOR
4	1	FM2DDDKN	FLOW CONTROL VALVE - STACK MODULE	PARKER
5	1	SUPPLIED WIZWZ408EB	DIRECTION CONTROL VALVE - SOL. OPERATED - SURFACE MOUNTED	ENERPAC
6	1	BD03-ABX-S	RELIEF VALVE - STACK MODULE	PARKER
6-1	1	RAH101SS0	RELIEF	PARKER
7	2	21353-25-6000L	PRESSURE GAUGE	WIKA
7-1	2	EGA003	GAUGE TEE	EAGLE PRO
8	2	RC254	CYLINDER HYDRAULIC	ENERPAC
9	2	2FIC0201ASC	FLOW CONTROL VALVE - SURFACE MOUNTED	DENISON
10	2	V66	FLOW CONTROL VALVE - SURFACE MOUNTED	ENERPAC



HYSECO <small>FLUID SYSTEMS LTD.</small> 7399 RIVER ROAD DELTA BC V4G1B2 TEL: (604) 940-8885 FAX: (604) 940-8803 WWW.HYSECO.COM		NAME: MGW DATE:	COMPANY: TRIUMF TITLE: CANTILEVER CRANE HPU
JOB:	DRAWN:	CHECKED:	APPROVED:
PO:	THE INFORMATION CONTAINED IN THIS DRAWING IS THE SOLE PROPERTY OF HYSECO FLUID SYSTEMS LTD. ANY REPRODUCTION IN PART OR AS A WHOLE WITHOUT THE WRITTEN PERMISSION OF HYSECO FLUID SYSTEMS LTD IS PROHIBITED.		SCALE:
DO NOT SCALE DRAWING	SIZE: B DWG. NO: 3081H	REV: 1	SHEET:

A

B

A

B

4

3

2

1

4

3

2

1