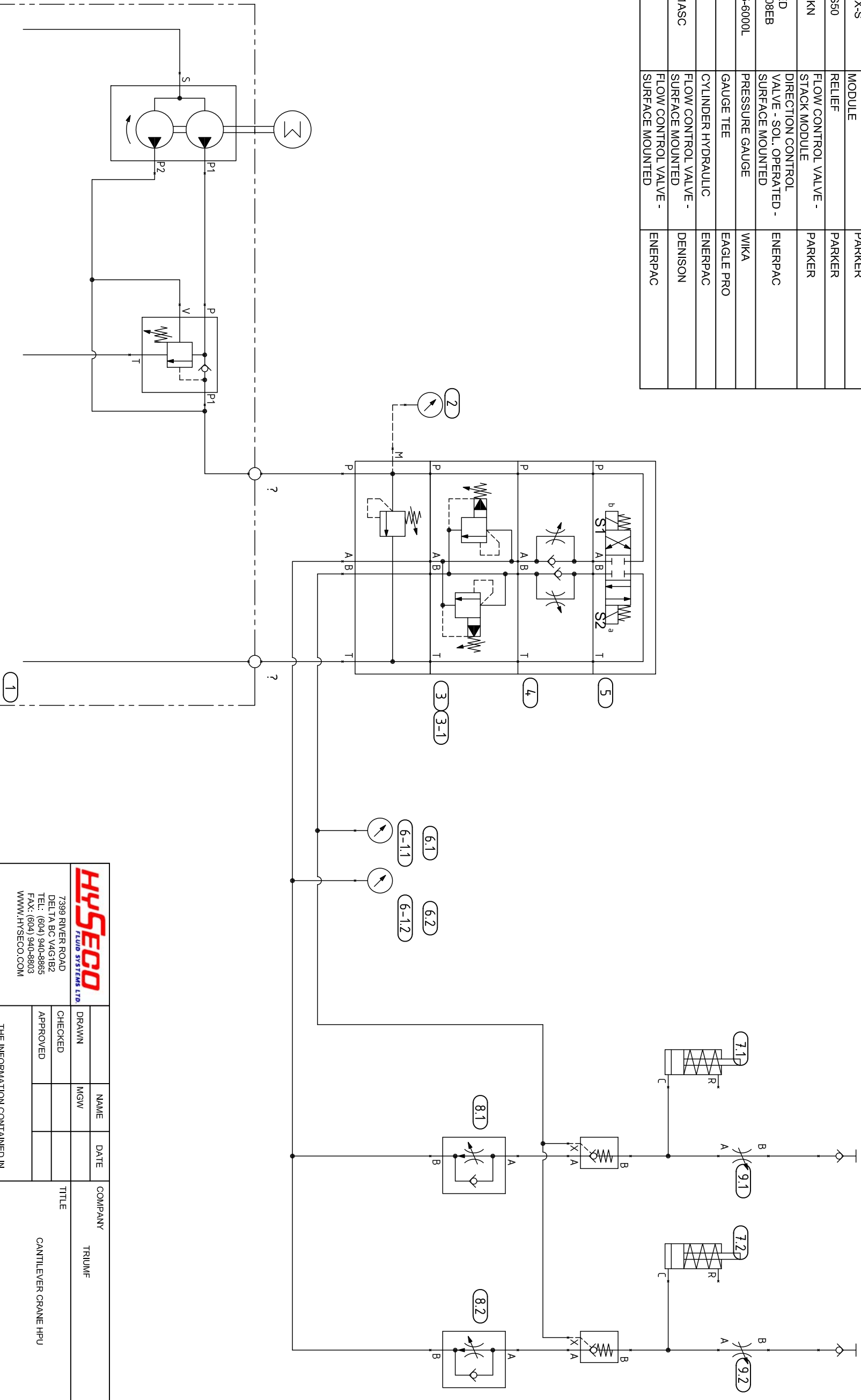


ITEM ID	QUANTITY	MODEL CODE	DESCRIPTION	MANUFACTURER
1	1	ZW2408EB	POWER UNIT	ENERPAC
2	1	21353-25-06000B	PRESSURE GAUGE	WIKA
3	1	BD03-ABX-S	RELIEF VALVE - STACK MODULE	PARKER
3-1	1	RAH101S50	RELIEF	PARKER
4	1	FM2DDDKN	FLOW CONTROL VALVE - STACK MODULE	PARKER
5	1	SUPPLIED W/ZW2408EB	DIRECTION CONTROL VALVE - SOL. OPERATED - SURFACE MOUNTED	ENERPAC
6	2	21353-25-6000L	PRESSURE GAUGE	WIKA
6-1	2	EGA003	GAUGE TEE	EAGLE PRO
7	2	RC254	CYLINDER HYDRAULIC	ENERPAC
8	2	2FIC0201ASC	FLOW CONTROL VALVE - SURFACE MOUNTED	DENISON
9	2	V66	FLOW CONTROL VALVE - SURFACE MOUNTED	ENERPAC



		7399 RIVER ROAD DELTA BC V4G1B2 TEL: (604) 940-8865 FAX: (604) 940-8803 WWW.HYSECO.COM	COMPANY	TRILUWF
		DRAWN CHECKED APPROVED	NAME MGW	DATE
JOB	THIS INFORMATION CONTAINED IN THIS DRAWING IS THE SOLE PROPERTY OF HYSECO FLUID SYSTEMS LTD. ANY REPRODUCTION IN PART OR AS A WHOLE WITHOUT THE WRITTEN PERMISSION OF HYSECO FLUID SYSTEMS LTD IS PROHIBITED.		SIZE B	DWG. NO. 3081H
PO	DO NOT SCALE DRAWING	SCALE	REV 0	SHEET

