

MARCH 22ND STUNDOWN

1988

the M9 Q1-Q2 FOR NEW ALLOCATION.

Remove By Bus Section @ T2 For New Installation.

Remove 1A Q12 & 13 FOR NEW BEAM PIPE.

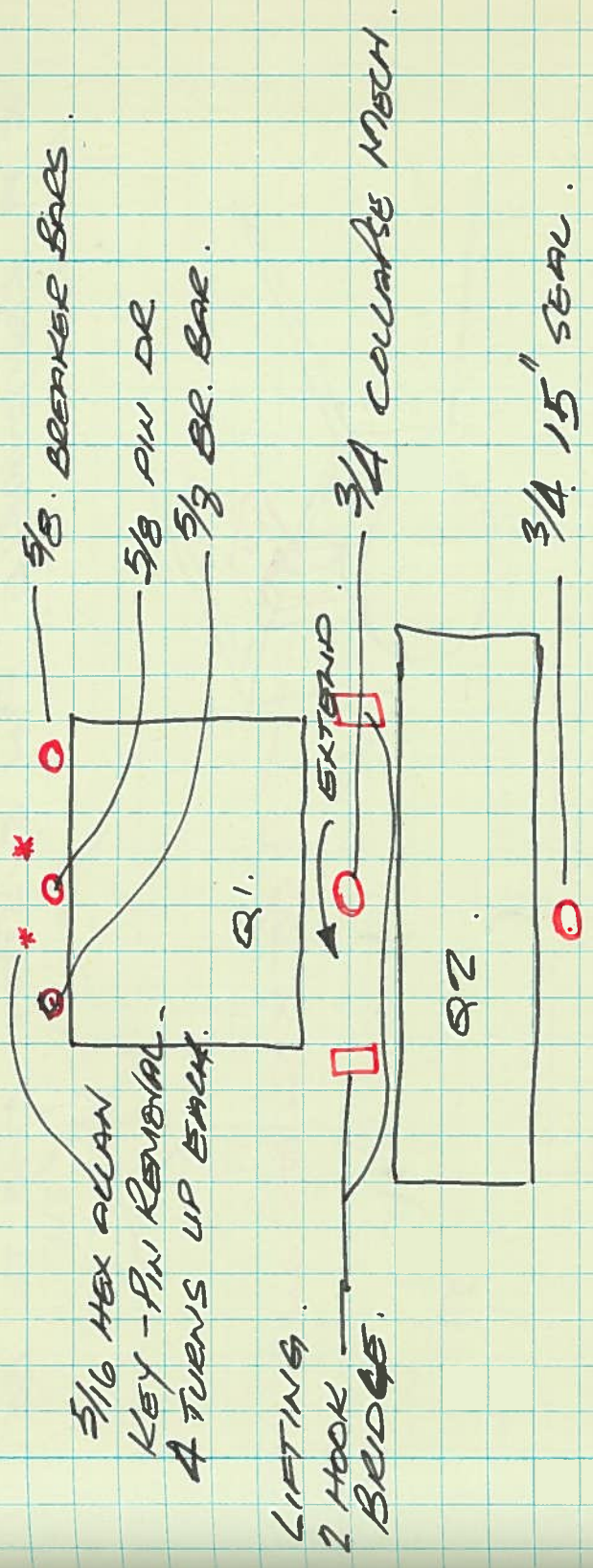
Remove VAS VALVE Remove Beam Section & OR alignment monument. (for Collimator align).

New M9 Q1-Q2 EXERCISED FOR FIRST TIME FIELD PLATE TO BE MODIFIED - CHANGE PIN BAR HOLDER BOLTS TO 3/8-16 SOCKET HD? INDICUM KING DOES NOT FIT. NEED 1/8" (A WIRE LOC BOX). GONG IN JUST CLEARS.

17 MAY

WINDING SCHEDULE

AFTER MOVS TO BREAKER BARS, ALIGN OF 15" FLANGE (NOT WELDED IN TRU POSN) Q1-2 WERE INSTALLED



8" SEAL @ T2 INDICUM 15" SEAL @ Q2. GUMMY MAG.

T2 AREA RAMP DOWN - PRESSURE POOL BUT HELIUM CHECK ON 8 & 15 SEALS DID NOT SHOW ANY LEAK.