

WARR 22nd STATION

1988

Remove W9 Q1-Q2 FOR NEW INSTALLATION.

23 Remove BY BUS Section @ T2 FOR NEW INSTALLATION.

23 Remove W9 Q1-Q2 FOR NEW BEAM PIPE.

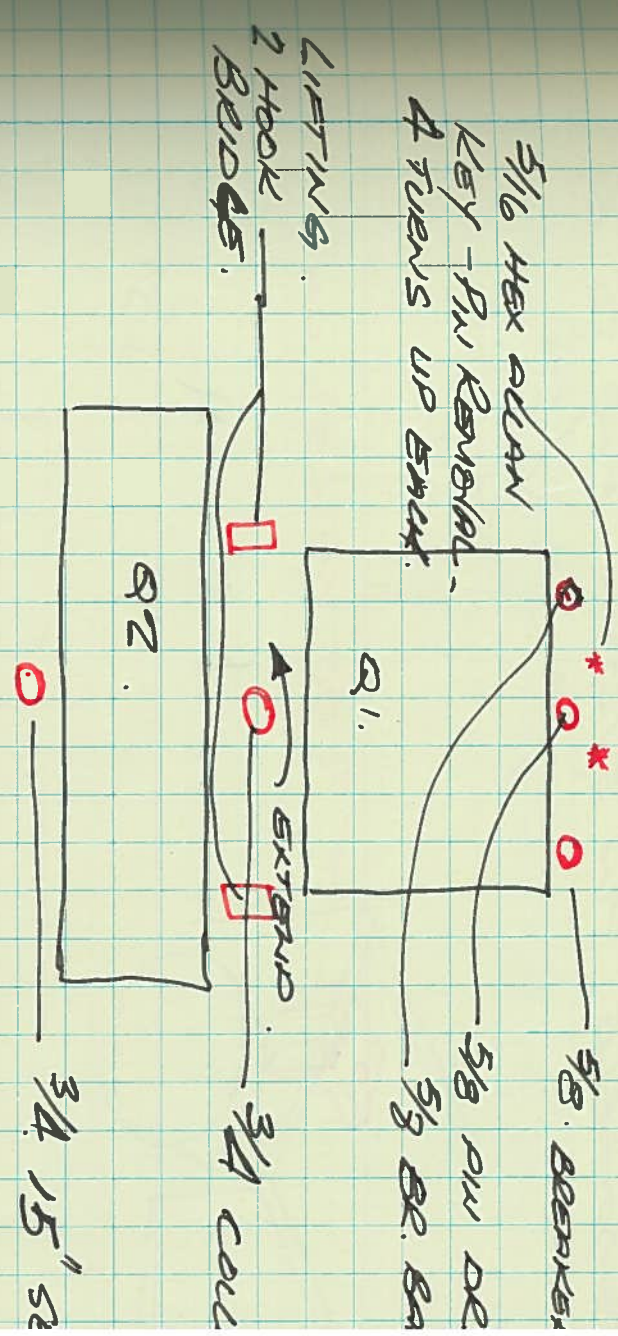
24 Remove VAS VALVES REMOVE BEAM SECTION AND ALIGNMENT MONUMENT. (FOR BILLMATER ADJUST).

28 APRIL NEW W9 Q1-Q2 EXERCISED FOR FIRST TIME

Q1 FROM PORTS TO BS AND TIED - CHANGE PIN BAR HOLDER BOLTS TO 3/8-16 SOCKET W/16 INDIUM RING DOES NOT FIT. NEED 1/8" RING W/16 VAS BOX. GONG IN JUST CLEARS.

17 May. **NOTICE** **SATURDAY 5/19/88 A!**

AFTER WOODS TO BREAKER BARS, OR 15" FLANGES. (NOT WELDED IN THE Q1-2 WERE INSTALLED)



8" SEAL @ T2 INDIUM. 15" SEAL @ Q2. GUMMY MASS. T2 BEEN RUND DOWN. - PRESSURE BUT HAVEN CHECK ON 8 & 15 SEAL DID NOT SHOW ANY LEAK.