

T2 M9 Alignment

Monday, February 06, 2017
3:56 PM

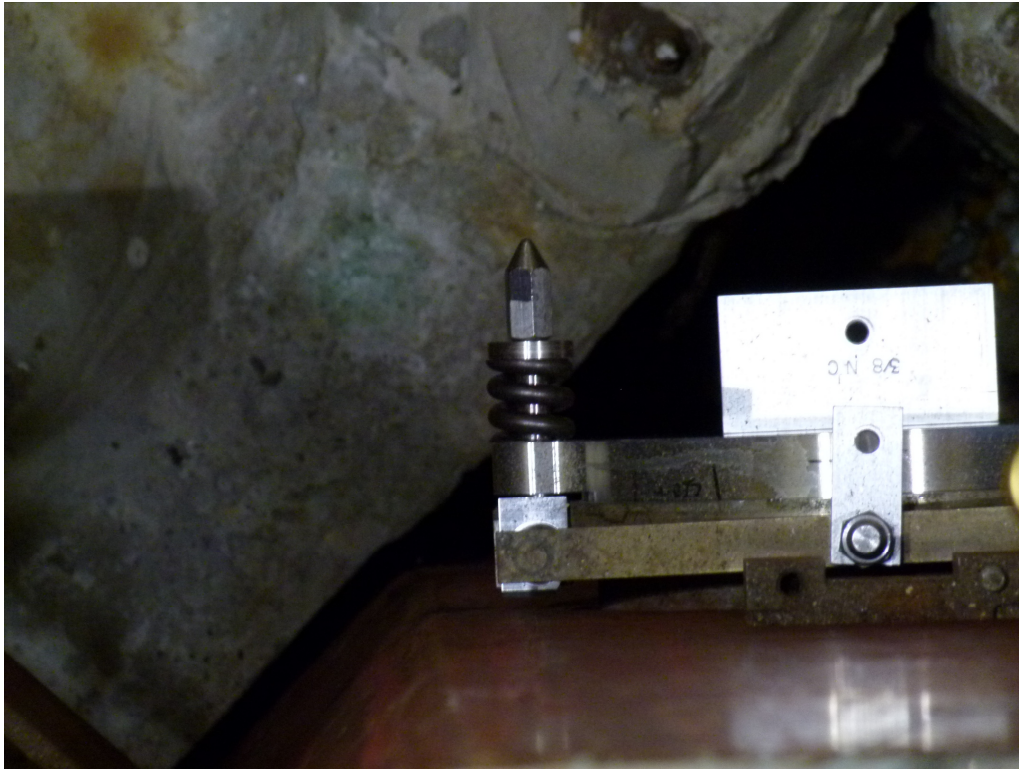
Job dose				
	2017-02-06	2017-02-07		
kcn	0.02	.06		
rk	0.0	?		
ie	n/a	.02		

2017-02-06 3:57 PM

- No real activity today, set up video cams and pole tools
- Alignment group did FARO scans of work site
- Inspected blank off plate some errors.



East eye before removal



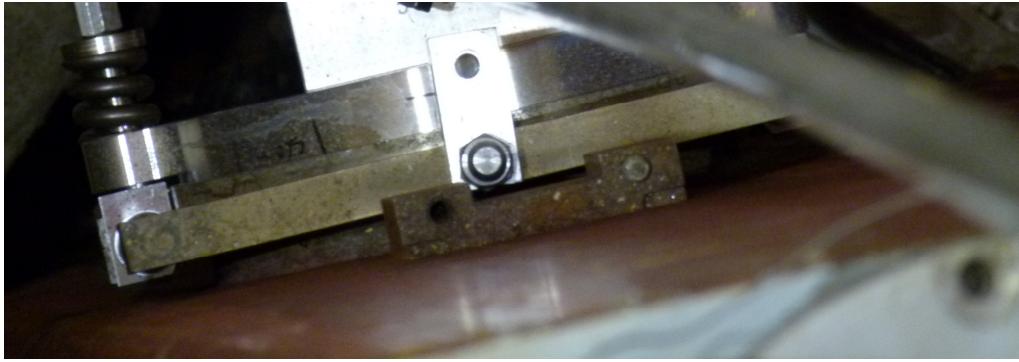
West eye before removal

2017-02-07 11:56 AM

- Removed blank off from t2 m9 port, had to pry off with screw driver via spring ears. Clean removal it seems.
- Blank off is 200 uSv @ .5 m, 5000 CPM above bg.
- looks like 2 knife steps all around with oozing on the left and right, 0 and 180 deg positions. 0 and 180 look like 2.5 steps. Looks like it took one turn to remove/loosen blank off.
- Junk indium at bottom of exit port still present, indium knife edge seems clean. Ribbon stayed in blank off.

- Blank off just before removal





- setup for alignment group complete with steel plate



Spring eyes from side before removal, images flipped because camera is mounted upside down:

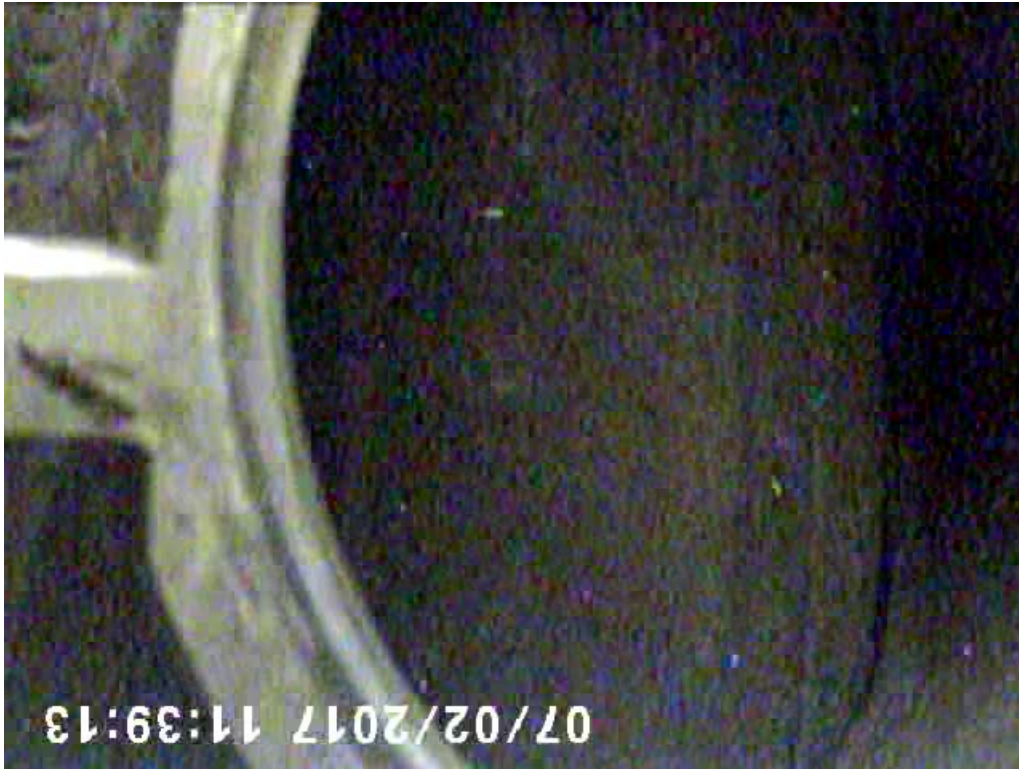
East spring ,looking west.



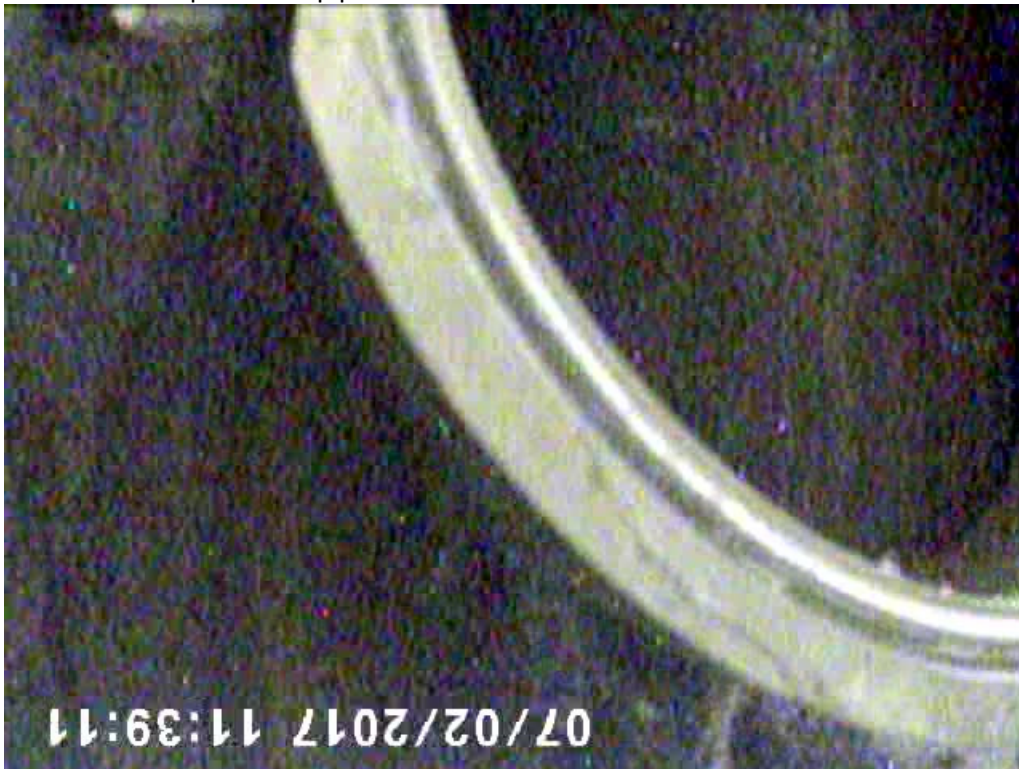
West spring, looking east.



Flange initial inspection, images flipped due to camera mounting.



Old indium still present in pipe floor.





Upper east corner indium counter bore remnants still present.



