

Successful exchange of gamma dump HV shield.

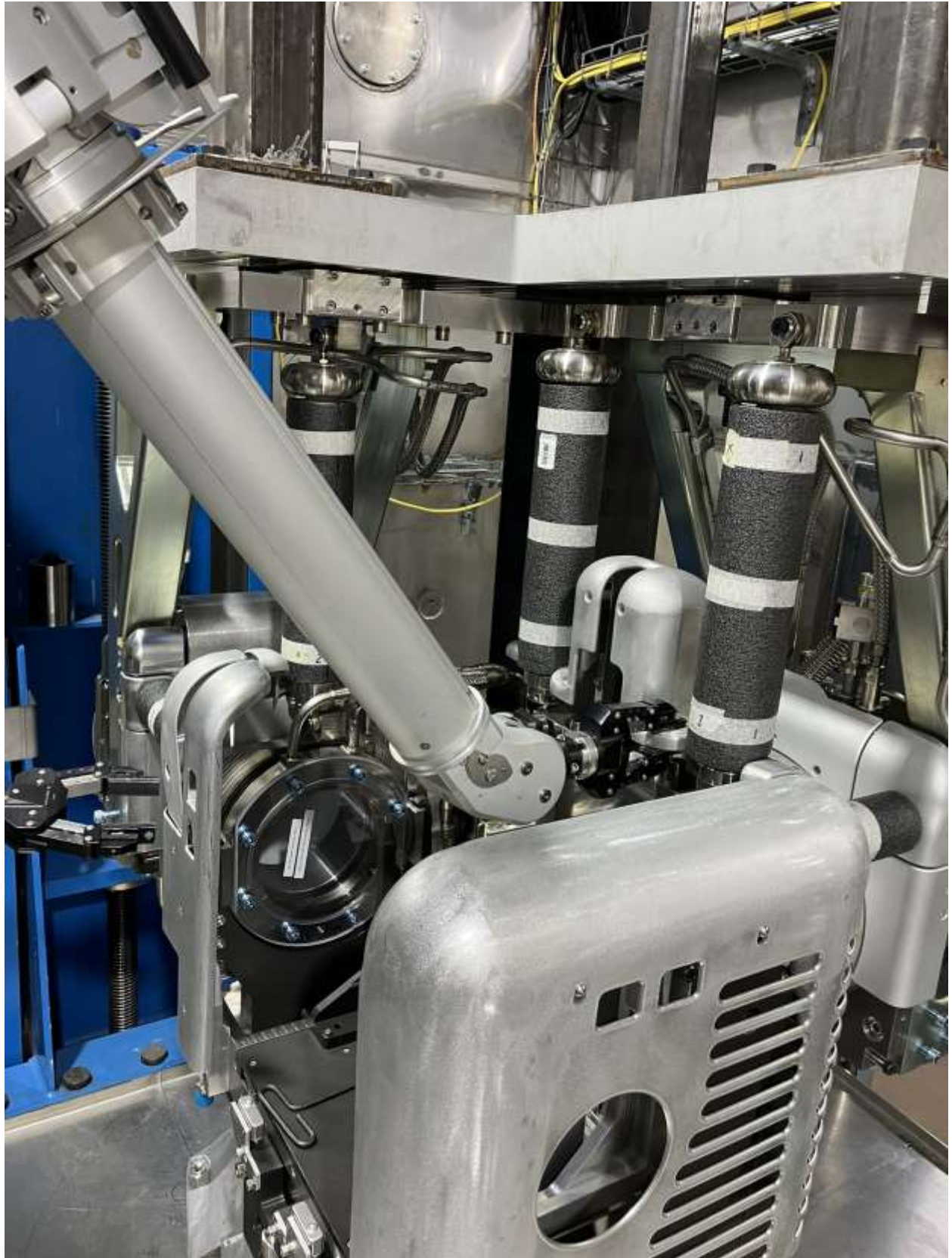


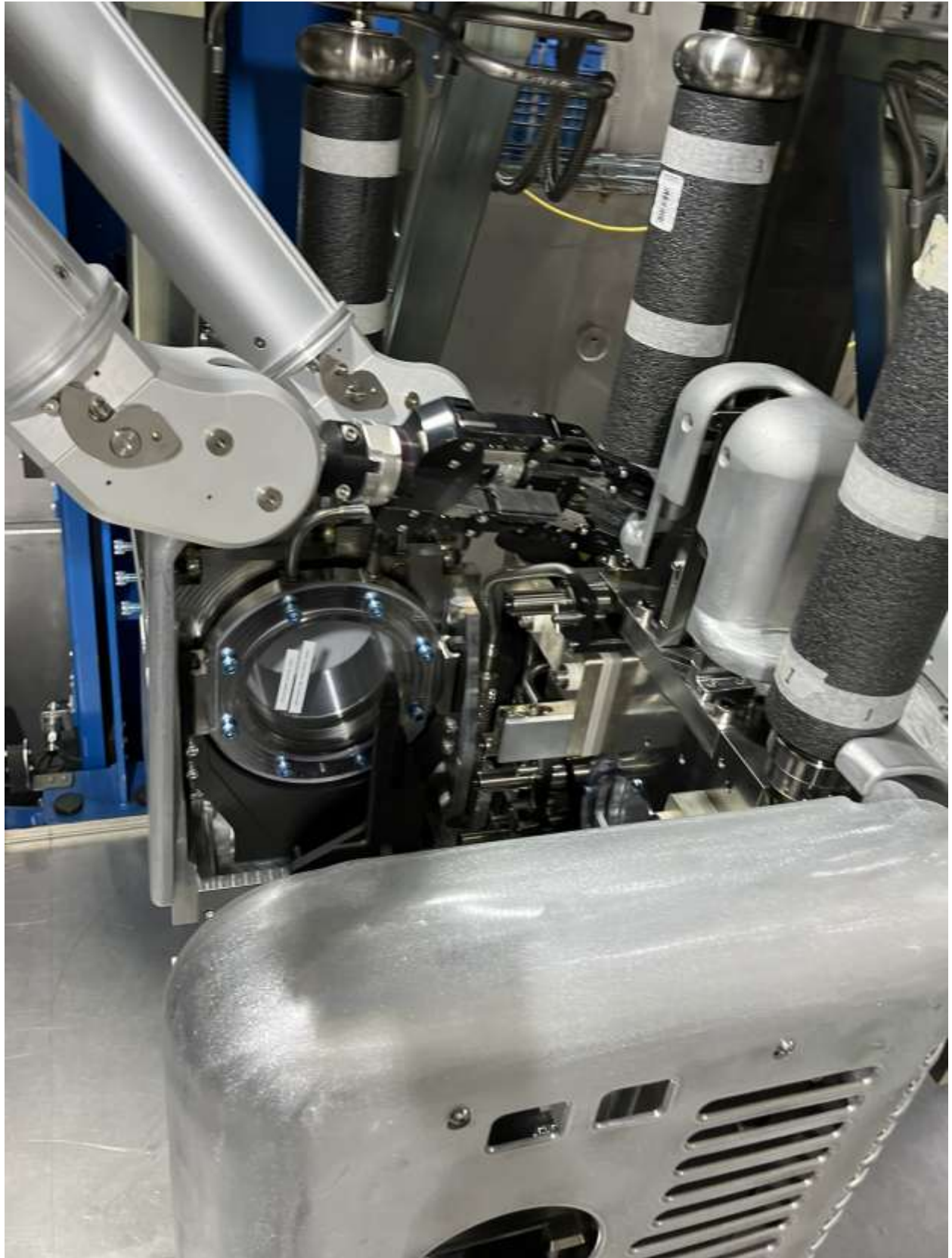








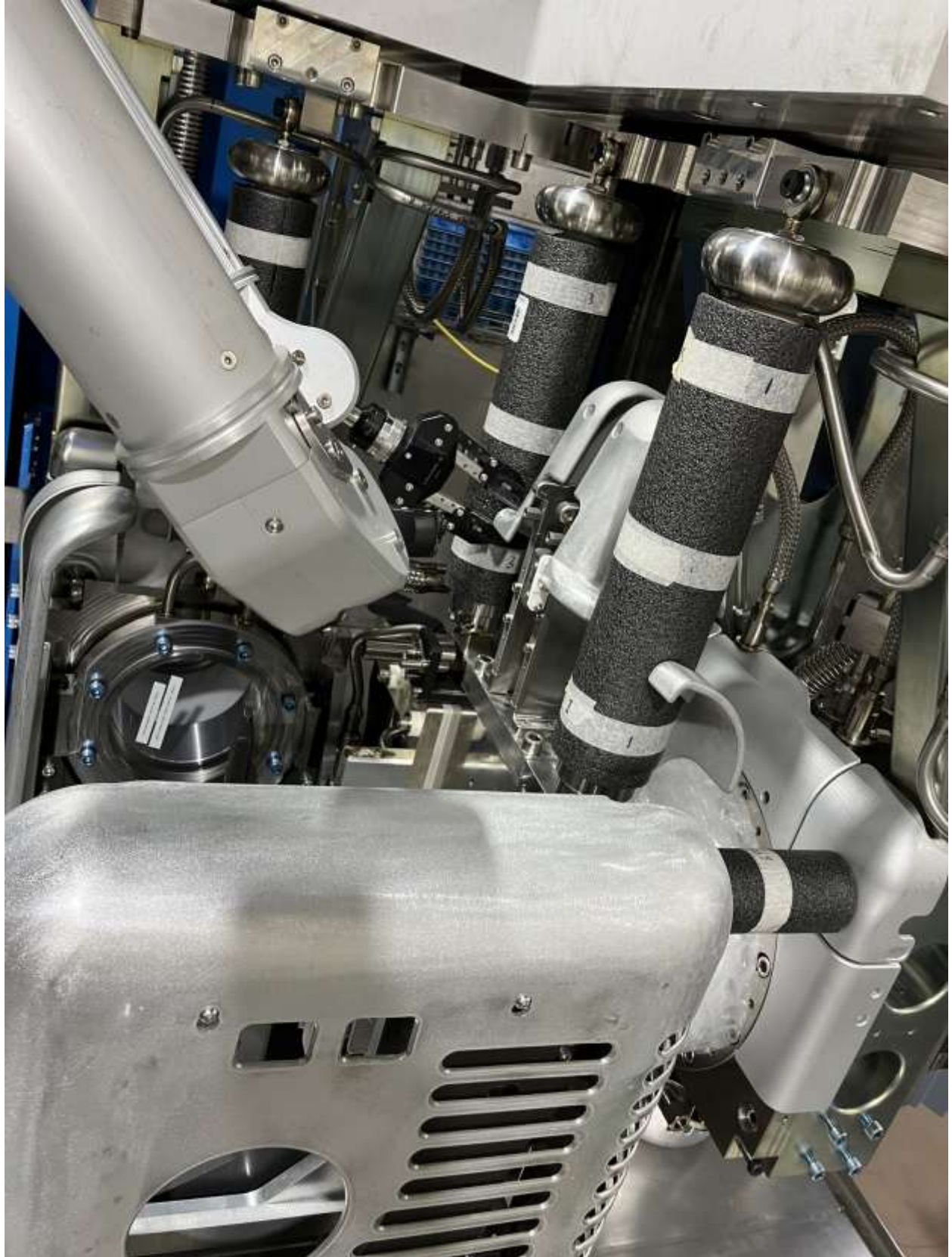








Sliding helmet up



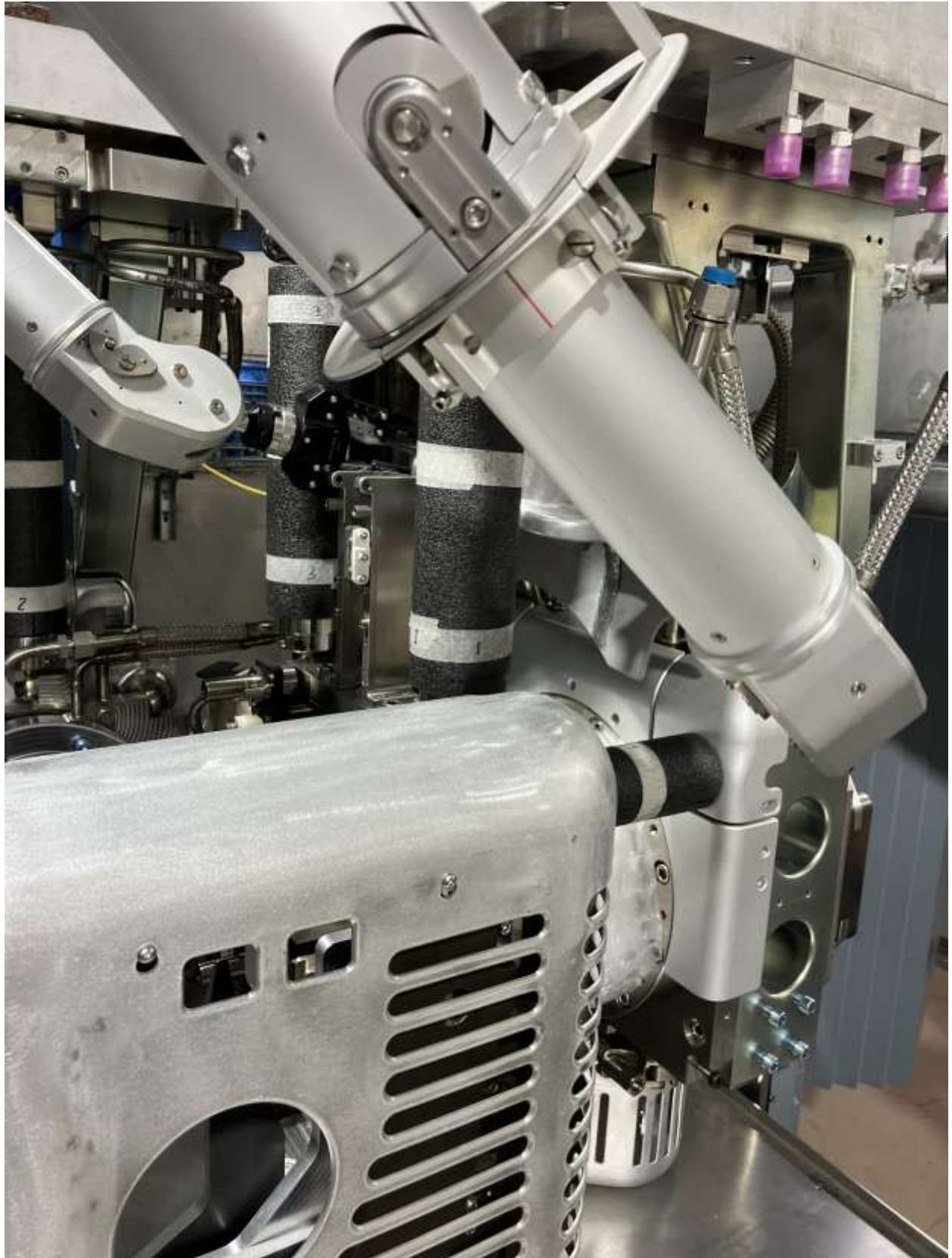






Interference between left manipulator arm and plug shield

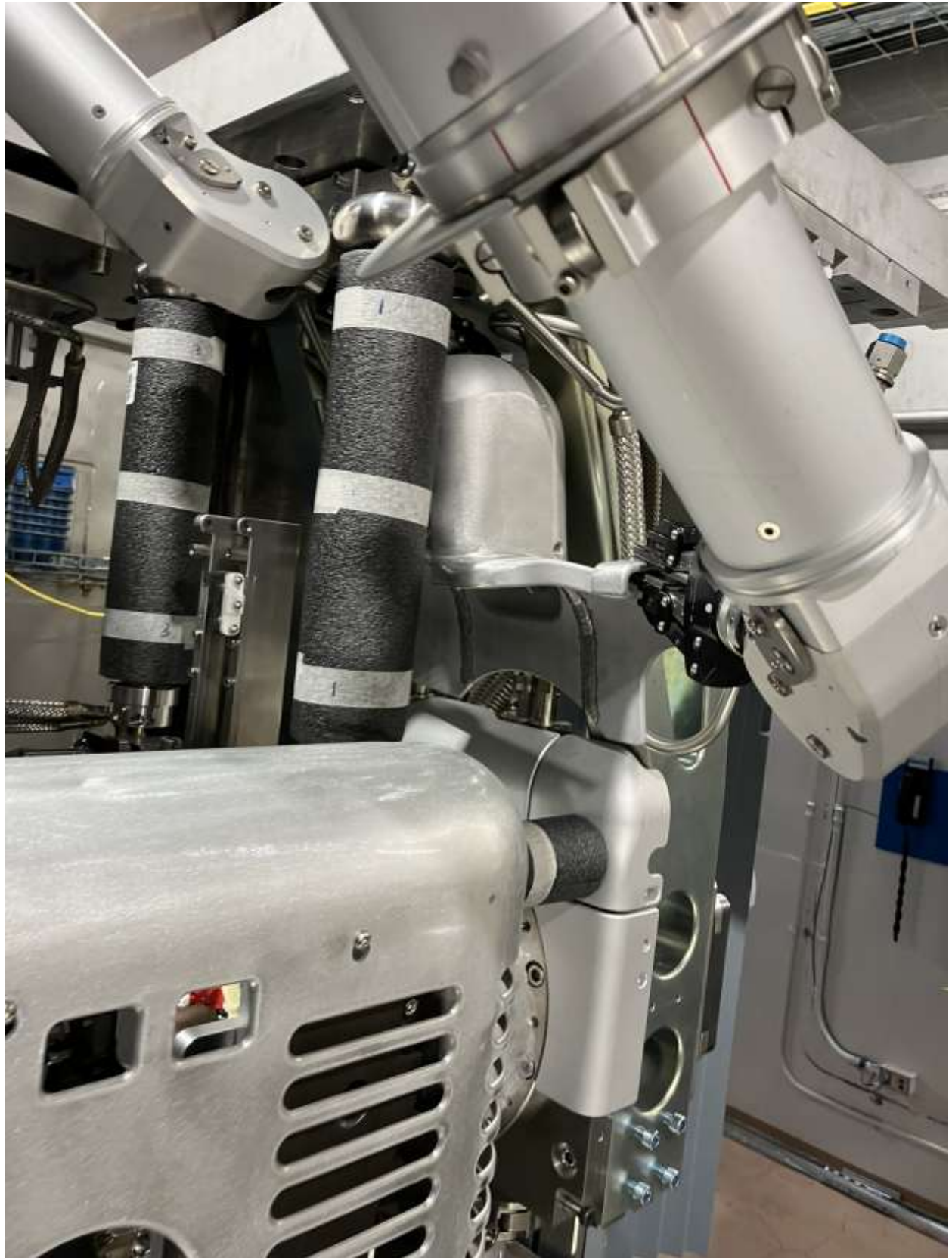
















Successful removal







Not coupled VCR line interfering with reinsertion

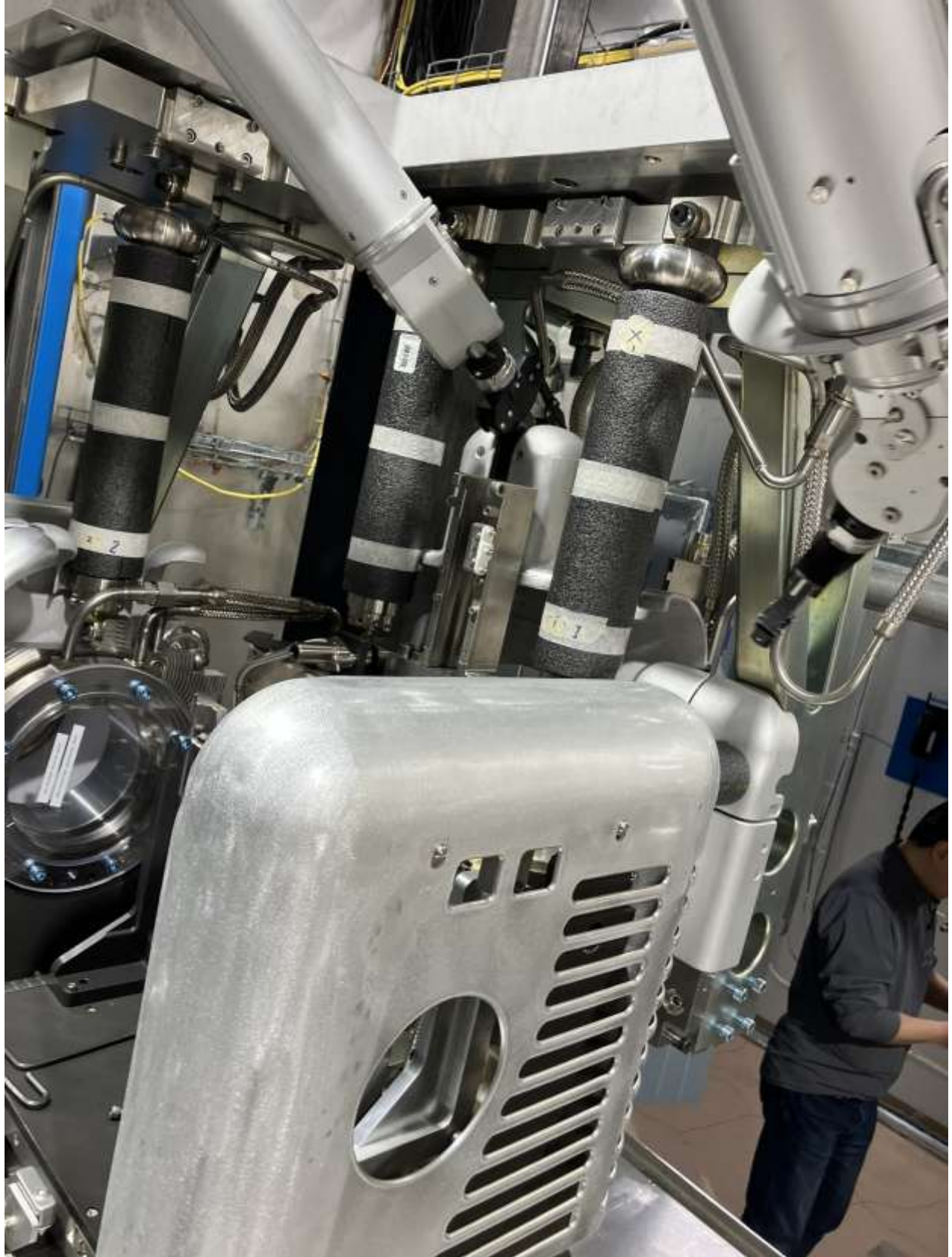














Helmet back on























Smaller gap on manipulator grabbing feature (tighter to finger width) will help keep the shield from tilting relative to the fingers when not gripped tightly.

