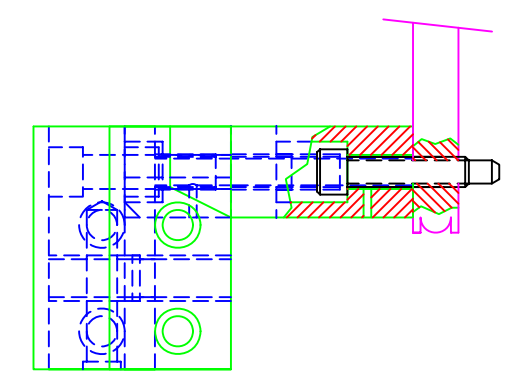
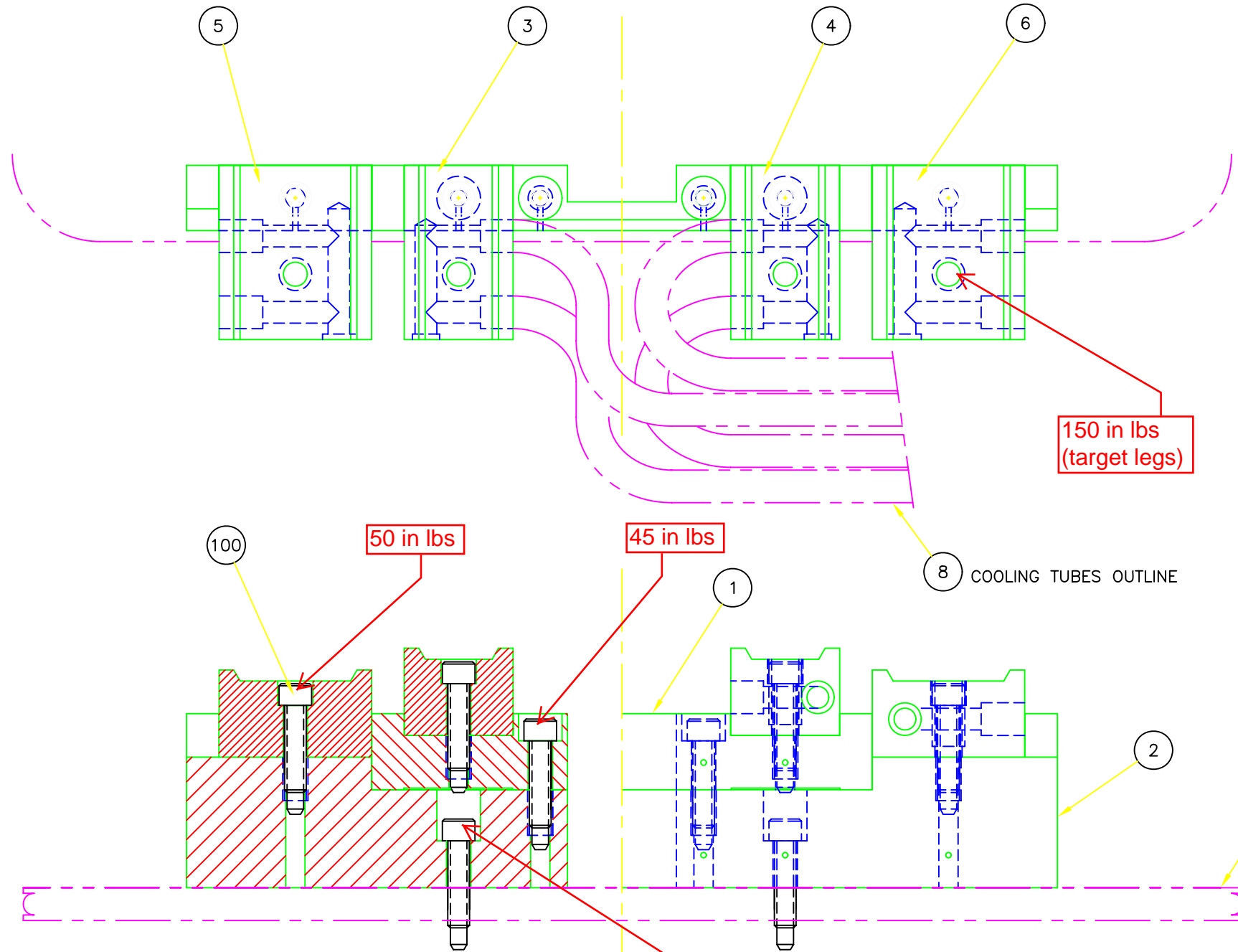


Insulators ITD0053 and ITD0054 replaced in Evaporator 2 2013-01-10

ITEM	REF No./DESCRIPTION	MATERIAL	QUAN
1	ITD0053C Conductor Insulating Block A		1
2	ITD0054C Conductor Insulating Block B		1
3	ITD0056C Conductor Cu Block Left		1
4	ITD0055C Conductor Cu Block Right		1
5	ITA0582 Target Conductor Cu Block Left		1
6	ITA0584 Target Conductor Cu Block Right		1
7			
8	ITD0057 Cooling Line Layout		1
100	TGN0076 1/4-20 RH Screw	MS	8



TOLERANCES UNLESS OTHERWISE SPECIFIED

FRACTIONS	± 1/32
DECIMALS .XX	± .01
DECIMALS .XXX	± .005
ANGULAR	± .25
SURFACE FINISH	μ in

ALL DIMS IN INCHES

DESIGNED	DL-
DRAWN	L.JUDY
CHECKED	ITA2155
REA #	ITA0587
TRI-DN-	

B	OCT. 15/08	D/3	ITEM 7 NO LONGER REQUIRED. ECO1773	DJR	PB
A	MAR 30-05		ORIGINAL ISSUE	LU	
REV	DATE	LOC	REVISION DESCRIPTION	BY	APP'D
			TRIUMF 4004 WEBBROOK MALL VANCOUVER, BRITISH COLUMBIA CANADA V6T-2A3	CANADA'S NATIONAL MESON FACILITY	
CONDUCTOR INSULATOR BLOCK ASSY					
FEBIAD SOURCE					
ISAC TARGET DEVELOPMENT					
SCALE	FULL	APPROVED	DWG NO.	REV	B
DATE	MAR 30/05		ITD0052C		